



**HAL**  
open science

**Exposure to the paralytic shellfish toxin producer  
Alexandrium catenella increases the susceptibility of the  
oyster *Crassostrea gigas* to pathogenic vibrios.**

Céline Abi-Khalil, Carmen Lopez-Joven, Eric Abadie, Véronique Savar,  
Zouher Amzil, Mohamed Laabir, Jean-Luc Rolland

► **To cite this version:**

Céline Abi-Khalil, Carmen Lopez-Joven, Eric Abadie, Véronique Savar, Zouher Amzil, et al.. Exposure to the paralytic shellfish toxin producer *Alexandrium catenella* increases the susceptibility of the oyster *Crassostrea gigas* to pathogenic vibrios.. *Toxins*, 2016, 8 (1), pp.24. 10.3390/toxins8010024 . hal-01311082

**HAL Id: hal-01311082**

**<https://sde.hal.science/hal-01311082>**

Submitted on 3 May 2016

**HAL** is a multi-disciplinary open access archive for the deposit and dissemination of scientific research documents, whether they are published or not. The documents may come from teaching and research institutions in France or abroad, or from public or private research centers.

L'archive ouverte pluridisciplinaire **HAL**, est destinée au dépôt et à la diffusion de documents scientifiques de niveau recherche, publiés ou non, émanant des établissements d'enseignement et de recherche français ou étrangers, des laboratoires publics ou privés.

Article

# Exposure to the Paralytic Shellfish Toxin Producer *Alexandrium catenella* Increases the Susceptibility of the Oyster *Crassostrea gigas* to Pathogenic Vibrios

Celina Abi-Khalil <sup>1</sup>, Carmen Lopez-Joven <sup>1</sup>, Eric Abadie <sup>2</sup>, Veronique Savar <sup>3</sup>, Zouher Amzil <sup>3</sup>, Mohamed Laabir <sup>2</sup> and Jean-Luc Rolland <sup>1,\*</sup>

Received: 4 December 2015; Accepted: 7 January 2016; Published: 15 January 2016

Academic Editor: Luis M. Botana

<sup>1</sup> Institut Français de Recherche pour l'Exploitation de la Mer (IFREMER), Interactions-Hôtes-Pathogènes-Environnements (IHPE UMR 5244), University of Perpignan Via Domitia, Centre National de la Recherche Scientifique (CNRS), University of Montpellier, Montpellier F-34095, France; celina.abi-khalil@umontpellier.fr (C.A.-K.); cljoven@gmail.com (C.L.-J.)

<sup>2</sup> Center for MARine Biodiversity, Exploitation and Conservation (MARBEC, UMR 9190), University of Montpellier, Centre National de la Recherche Scientifique (CNRS), Institut de Recherche pour le Développement (IRD), Institut Français de Recherche pour l'Exploitation de la Mer (IFREMER), Montpellier F-34095, France; eric.abadie@ifremer.fr (E.A.); mohamed.laabir@univ-montp2.fr (M.L.)

<sup>3</sup> Institut Français de Recherche pour l'Exploitation de la Mer (IFREMER), Phycotoxines Laboratory, l'Iled'Yeu street BP 21105, Nantes Cedex 3 F-44311, France; veronique.savar@ifremer.fr (V.S.); zouher.amzil@ifremer.fr (Z.A.)

\* Corresponding: jean.luc.rolland@ifremer.fr; Tel.: +33-467-144-709; Fax: +33-467-144-622

**Abstract:** The multifactorial etiology of massive *Crassostrea gigas* summer mortalities results from complex interactions between oysters, opportunistic pathogens and environmental factors. In a field survey conducted in 2014 in the Mediterranean Thau Lagoon (France), we evidenced that the development of the toxic dinoflagellate *Alexandrium catenella*, which produces paralytic shellfish toxins (PSTs), was concomitant with the accumulation of PSTs in oyster flesh and the occurrence of *C. gigas* mortalities. In order to investigate the possible role of toxic algae in this complex disease, we experimentally infected *C. gigas* oyster juveniles with *Vibrio tasmaniensis* strain LGP32, a strain associated with oyster summer mortalities, after oysters were exposed to *Alexandrium catenella*. Exposure of oysters to *A. catenella* significantly increased the susceptibility of oysters to *V. tasmaniensis* LGP32. On the contrary, exposure to the non-toxic dinoflagellate *Alexandrium tamarense* or to the haptophyte *Tisochrysis lutea* used as a foraging alga did not increase susceptibility to *V. tasmaniensis* LGP32. This study shows for the first time that *A. catenella* increases the susceptibility of *Crassostrea gigas* to pathogenic vibrios. Therefore, in addition to complex environmental factors explaining the mass mortalities of bivalve mollusks, feeding on neurotoxic dinoflagellates should now be considered as an environmental factor that potentially increases the severity of oyster mortality events.

**Keywords:** harmful algae; environment; interaction; pathogens; defense; paralytic shellfish toxin

## 1. Introduction

The mortality of the juvenile pacific oyster *Crassostrea gigas* is the result of complex interactions between oysters, their environment and opportunistic pathogens. It is a global phenomenon that has been observed several times in marine systems of different countries, including Brazil, the USA [1,2] and recently reported in New Zealand, Australia and Europe [3–6]. In France, high *C. gigas* mortality rates (60%–100%) have been reported since 1991. They are of major concern to oyster farmers [7,8]

due to the important economic losses. Pathogenic populations of *Vibrio* from the Splendidus clade have been associated with the recurrent “summer mortality” outbreaks in *C. gigas* juveniles [9–13]. Among them is *Vibrio tasmaniensis* LGP32 [10], whose pathogenic processes have been characterized in detail [14–16]. The ostreid herpes virus OsHV-1  $\mu$ Var was also associated with abnormal mortalities of *C. gigas* in France [17,18]. It is believed that abiotic factors enhance the susceptibility of oysters to infections by various pathogens, such as bacteria and viruses [9,10,19]. Temperature was actually found to be one major driving environmental factor influencing oyster mortality [20]. However, when considered individually, pathogens, temperature, reproductive effort, diet and farming practices do not account for the global increase in oyster mortalities in recent years [20–23].

*C. gigas* oysters, like other bivalve mollusks, are filter feeders that feed on micro-phytoplankton, including toxic dinoflagellates. Among these dinoflagellates, *Alexandrium catenella*, a paralytic shellfish toxin (PST) producer, is observed worldwide [24]. Extensive blooms of this species have been reported in various marine environments, such as the Pacific Ocean of North America [25], Chile [26], New Zealand [27], Japan, China, South Korea [28,29] and the western Mediterranean Sea [30,31]. In the Mediterranean Sea, blooms of *A. catenella* were observed in confined areas, such as lagoons and harbors [32,33]. Since 1998, several *A. catenella* blooms were observed in spring and/or autumn in the Mediterranean Thau Lagoon (France, N 43°25', E 03°39'), a shallow lagoon open to the sea and holding an important oyster (*C. gigas*) production (10,000 tones·year<sup>-1</sup>) [34–38]. In Thau Lagoon, *A. catenella* could reach high densities during bloom periods ( $3 \times 10^6$ – $14 \times 10^6$  cells·L<sup>-1</sup>) with toxin contamination in bivalves frequently exceeding the sanitary threshold over which the bivalves are considered dangerous for consumption [39].

It is now established that exposure of mollusks to high concentrations of PST-producing dinoflagellates could negatively affect the feeding, burrowing and survival of these bivalves [40–43]. Paralytic shellfish toxin (PST) producers are known to negatively affect the physiological and cellular processes of oysters, such as filtration and digestion [44–47]. Feeding on these neurotoxic dinoflagellates leads to an accumulation and biotransformation of PSTs mainly in the digestive gland [48,49]. Interestingly, these potent toxic algae impact the oyster immune system and induce an increase of reactive oxygen species (ROS) production and an inhibition of hemocyte phagocytosis [50–52]. Importantly, Medhioub *et al.* (2013) showed that the PST-producing *A. catenella* induces apoptosis in *C. gigas* hemocytes [53]. More recently, it has been shown that exposure to a toxic strain of *A. catenella* modifies the host-pathogen interaction by reducing the prevalence of OsHV-1  $\mu$ var infection [54]. However, the effects of *A. catenella* on the susceptibility of juvenile oysters to the bacterial pathogens involved in the summer mortality disease have not been investigated to date.

Here, we conducted a field study to investigate the relationship between the dynamics of *A. catenella* in the water column, the bioaccumulation of PSTs in oyster flesh and their mortality in the Thau Lagoon. The detection of PSTs in the flesh of oysters during a mortality event prompted us to investigate the negative effects of toxic algae on oyster susceptibility to pathogenic vibrios. In agreement with our field observations, controlled experiments showed that an exposure of *C. gigas* to *A. catenella* significantly impacts the survival of these mollusks when further infected with the pathogenic *V. tasmaniensis* strain LGP32.

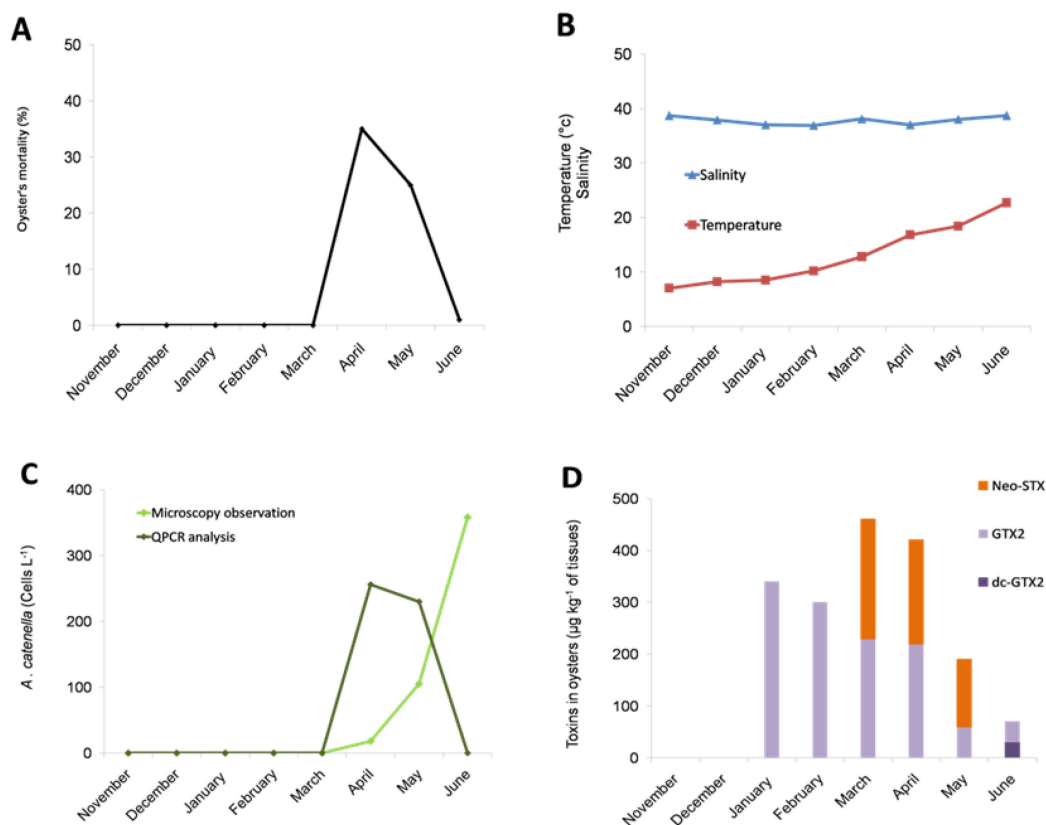
## 2. Results

### 2.1. Occurrence of an Oyster Mortality Event during a Toxic *Alexandrium catenella* in the Thau Lagoon

We monitored the dynamics of toxic algae in the Thau in 2014, when a massive mortality of oyster juveniles occurred in April and May, as recorded in the French Shellfish Observatory Network database (RESCO for Réseau d'observations conchylicoles) (Figure 1A). The mortality event occurred when the seawater temperature was between 13 °C and 17 °C (Figure 1B). Interestingly, *A. catenella* cells were observed in the water column from the Thau Lagoon in April, May and June 2014 at concentrations of 18, 105 and 358 cells·L<sup>-1</sup>, respectively, when the mortality event occurred (Figure 1C).

The identification of *A. catenella* DNA in April and May 2014 at concentrations corresponding to 256 and 230 cells·L<sup>-1</sup>, respectively, was confirmed by qPCR amplification (Figure 1C).

In addition to the presence of *A. catenella* in the water column, PSP toxins were detected in the flesh of juvenile oyster cultured in the Thau Lagoon. Importantly, neosaxitoxin (Neo-STX) was detected at high rates (up to 460 µg/kg of oyster flesh) in March, April and May 2014 concomitantly with the detection of *A. catenella* in the environment (Figure 1D). Interestingly, when mortality occurred (April–May 2014), the PSP rates tended to decrease in surviving oysters with no more Neo-STX being detected in June 2014, at the end of the mortality event. After the mortality event, in June 2014, neo-STX was no longer detected in surviving oysters; only low rates of gonyautoxin 2 (GTX2) and decarbamoyl gonyautoxin (dc-GTX2) were detected.

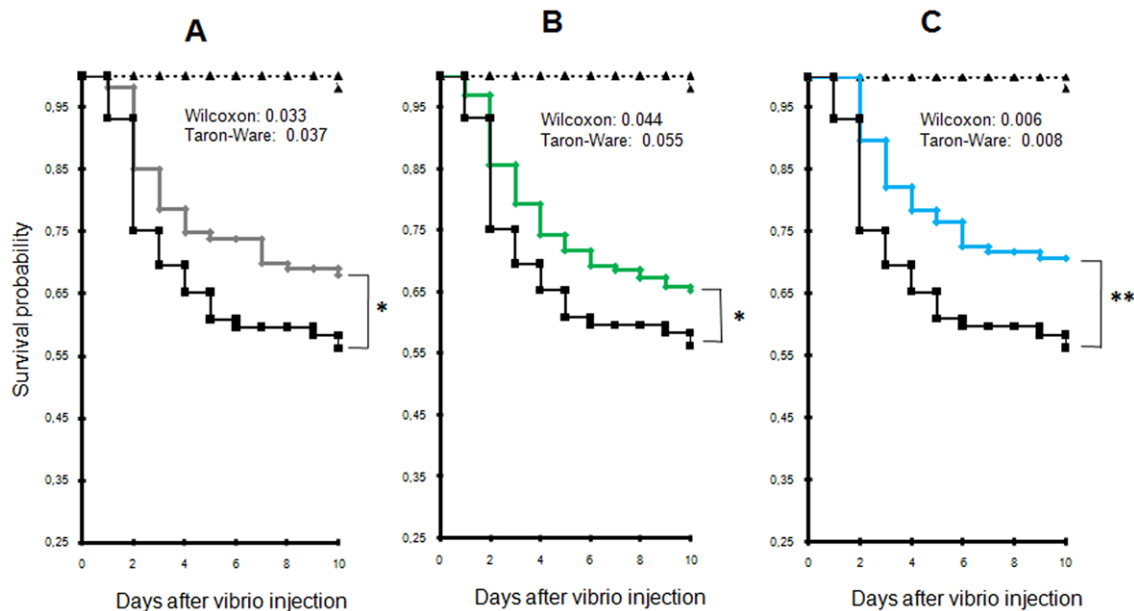


**Figure 1.** Field survey inside an oyster farm in Thau Lagoon in 2014. Oyster mortality (A); water temperature and salinity (B); abundance of *A. catenella* in water (C); accumulation of paralytic shellfish toxins in surviving oysters (D). The bar charts represent (in %) the temporal toxin in oysters. (Neo-STX for neosaxitoxin, GTX2 for gonyautoxin 2 and dc-GTX2 for decarbamoyl gonyautoxin 2).

## 2.2. Exposure to *Alexandrium catenella* Increases Oyster Mortality

To determine whether the presence of *Alexandrium catenella* could increase oyster mortality, juvenile oysters were exposed for 48 h either to the toxic strain of *A. catenella* (ACT03) or to *A. tamarense* (ATT07) or *T. lutea* used as foraging algae. Algal density was monitored in tanks all over the experiments showing similar concentrations in tanks during the time of experiment exposure (Figure S1). After a 24 h exposure to algae, oysters were injected with a lethal dose of *Vibrio tasmaniensis* LGP32 or sterile seawater (SSW), and oyster mortality was monitored for 10 days after their infection. We observed a significant increase in the mortality of oysters previously exposed to the toxic dinoflagellate *A. catenella* in comparison to individuals that were starved or exposed to *A. tamarense* or *T. lutea* ( $p = 0.033, 0.044$  and  $0.006$ , Wilcoxon test, respectively) (Figure 2). The LD<sub>30</sub> (lethal dose 30%) was reached at Day 3 for animals previously fed with *A. catenella*, while it occurred at

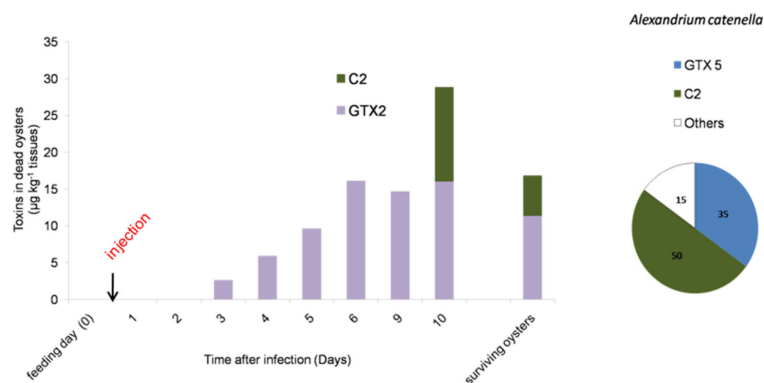
Days 7, 6 and 9 for oysters starved, fed with *A. tamarensis* or fed with *T. lutea*, respectively. In other words, at Day 10, the mortality of oysters that were previously exposed to *A. catenella* was 35%, 27% and 53% higher than that of oysters unfed or fed with *A. tamarensis* or *T. lutea*, respectively. In the absence of infectious challenge, no mortalities were recorded over 10 days for control animals injected with sterile sea water (SSW), for starved oysters and for oysters fed with *A. catenella*, *A. tamarensis* or *T. lutea*.



**Figure 2.** Comparison of Kaplan-Meier survival curves generated for oysters exposed to different algae and for starved mollusks. (A) Oysters fed *Alexandrium catenella* versus starved animals; (B) oysters fed *A. catenella* versus those fed *Alexandrium tamarensis*; (C) oysters fed *A. catenella* versus those fed *Tisochrysis lutea*. *A. catenella* (black); *A. tamarensis* (green); *T. lutea* (blue). Control oysters that were not infected by *Vibrio tasmaniensis* LGP32 or were injected with sterile seawater (SSW) are represented in black dashed triangles. \*  $p < 0.05$ , \*\*  $p < 0.01$ .

### 2.3. PSTs Accumulate in Infected Oysters

The *Alexandrium* sp. used in our experiment were controlled for their PST content. The ACT03 strain showed a toxin amount of  $5.3 \pm 0.4$  pg toxins·cell<sup>-1</sup>. The specific toxicity of this strain was  $1 \pm 0.1$  pg STX equivalent·cell<sup>-1</sup>. The ACT03 PST profile was characterized by the presence of carbamate, decarbamoyl and *N*-sulfocarbamoyltoxins. The following toxins were detected in decreasing concentrations: *N*-sulfocarbamoyltoxin 2 C2 (50%), GTX5 (35%), GTX4 (12%), GTX1 (1%) and Neo-STX (1%), with STX and dc-STX, GTX2, GTX3 and C4 present as trace amounts (Figure 3). No toxins were found in the *Alexandrium tamarensis* strain (ATT07). In order to monitor the PST profile in oysters in our controlled experiment, dead oysters fed with *A. catenella* and infected with *V. tasmaniensis* were collected every day. PSTs were not detected in the most sensitive oysters, which died after one and two days of incubation. PSTs were detected in dead oysters after three days of incubation (Figure 3). Then, the toxicity level increased to reach  $29 \pm 7$  µg·kg<sup>-1</sup> tissue wet weight at Day 10. Moreover, the toxin profile displayed a substantial change in comparison to that of *A. catenella* cells (Figure 3). Among the toxins produced by *A. catenella*, only C2 was detected in oysters 10 days after the beginning of the experiment. GTX2, which was present as a trace in *A. catenella* cells, represented 100% of the total toxins measured in oysters that died at Days 3, 4, 5, 6 and 9 and was the major toxin compound (57%) at the end of the experiment (Day 10). Interestingly, the toxicity level reached  $17 \pm 5$  µg·kg<sup>-1</sup> tissue wet weight in oysters considered as survivors 12 days after the infection (Figure 3).



**Figure 3.** Evolution of the paralytic shellfish toxin content ( $\mu\text{g}\cdot\text{kg}^{-1}$  wet weight of mollusk) in dead oysters during the *Vibrio tasmaniensis* LGP32 infection experiment. The bar charts represent (in %) the temporal toxin in oysters. The pie charts represent (in %) the toxin composition of *Alexandrium catenella*. (C2 for *N*-sulfocarbamoyltoxin 2, GTX2 for gonyautoxin 2 and GTX5 for gonyautoxin 5).

### 3. Discussion

Results from our laboratory experiments demonstrated that exposure to the neurotoxic *Alexandrium catenella* increases the susceptibility of *Crassostrea gigas* oysters to the pathogenic *V. tasmaniensis* LGP32. Indeed, a significant increase in oyster mortality induced by *Vibrio* infection was observed after exposure to *A. catenella*. Interestingly, we earlier showed that this toxic dinoflagellate induces the apoptosis of *C. gigas* hemocytes (immune cells) at PST concentrations similar to those generally observed *in situ* during a bloom of toxic algae [53]. Apoptosis was observed 24 h after exposure to *A. catenella*, which corresponds to the time we used for oyster infection in our experiment. Such destruction of the hemocytes, which play a key role in the defense mechanism of invertebrates [55], could strongly affect the capacity of *C. gigas* to resist bacterial infection and be responsible for the increased susceptibility of oysters observed here. Contrary to our results, exposure to *A. catenella* was shown to reduce the infection of oysters by the OsHV-1 herpesvirus [54]. The different susceptibility of oysters to those different pathogens is probably due to different immune reactions required to control bacterial and viral pathogens [56]. It can indeed be hypothesized that PSTs polarize the oyster immune response by triggering immune mechanisms that predispose to bacterial infections, but protect from viral infections. However, the potential lytic activity of the ACT03 strain towards hemocytes due to allelochemical compounds could not be ruled out and must be considered as an additional factor increasing the sensitivity of oysters to pathogens [57].

Supporting our hypothesis of a negative effect of toxic algae on oyster immunity, we observed an accumulation of toxins in the flesh of oyster batches showing higher mortality rates. Interestingly, no PSTs were found during the first and the second day of the incubation in the tissues of dead oysters that were fed with *A. catenella* and infected with *V. tasmaniensis*. GTX2, which was absent in the ACT03 cells, appeared in dead oysters three days after infection, and its concentration increased continuously until the 10th day of experimental exposure and during the *in situ* exposure. Data showed differences between toxins in the ingested *A. catenella* cells and those found in fed oysters. This could be attributed to a selective uptake of the toxins in oyster tissues, metabolic interconversion and elimination of the toxins [47,58–60]. Several studies suggested that an active biotransformation/interconversion of PSTs occurred [58,61]. The toxins that were accumulated in oysters in the experimental infection or in oyster individuals exposed *in situ* to natural *A. catenella* blooms can result from the transformation of some toxins (GTX3, C2 and others) produced by this dinoflagellate. This suggests that an important biotransformation process occurred in the *C. gigas* tissues. In our experiments, C2 and GTX2 accumulated in surviving oysters (Figure 3). We can speculate that these toxins, resulting from biotransformation, may have low toxicity and presumably did not affect the capacity of oysters to resist vibrio infection.



One important finding from this study is that *C. gigas* mortality observed in 2014 occurred while oyster flesh was contaminated by PSTs. These results correspond to previous works showing that PSTs were present at concentrations as high as  $920 \mu\text{g} \cdot \text{kg}^{-1}$  of digestive gland wet weight in oysters exposed to toxic algae in Thau Lagoon in May 2011 [62] when oyster mortality also occurred (April–May 2011 according to the French Shellfish Observatory Network). In the present study, toxins had been detected in oyster tissues since January 2014, while mortalities occurred only in April and May 2014. In agreement with our experimental data, this indicates that oyster intoxication by PSTs alone is not sufficient to induce mortalities, but could rather participate in the induction of oyster mortality in a multifactorial way that involves vibrios and likely other pathogens [13,63].

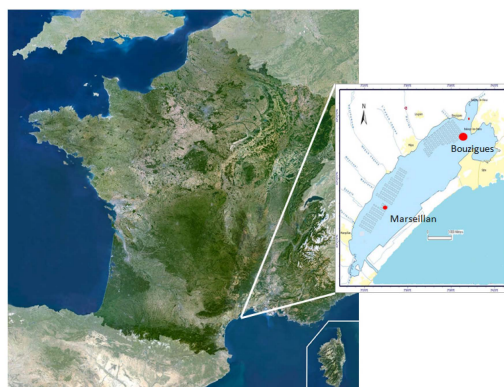
This study showed that *A. catenella* increases the susceptibility of *C. gigas* oysters to pathogenic *V. tasmaniensis*. To our knowledge, this is the first time that a direct link between a previous exposure of marine invertebrates to a paralytic shellfish toxin (PST) producer and the mortality induced by a pathogenic microorganism has been established. The interaction *A. catenella*/*C. gigas*/*Vibrio* was supported by the co-occurrence of oyster mortality and PST presence in oyster organs. The field observation suggested that *A. catenella* development *in situ* could trigger *C. gigas* mortality. Among the dinoflagellates producing PSTs, the genus *Alexandrium* is one of the major genera with respect to its diversity, magnitude and consequences on the ecosystem components [24]. Studies will provide further insight into the relationships between the established and emerging toxic dinoflagellates and mass mortalities of marine invertebrates. In particular the role of these algae in predisposing marine animals to microbes (bacteria and/or virus) occurring frequently in the environment should be the subject of further study. Other research focusing on direct interactions between toxins and bacteria would be required to better understand the mechanisms involved in these interactions. To conclude, in addition to complex environmental factors explaining mass mortalities of bivalve mollusks, feeding on toxic algae should now be considered a contributing factor.

## 4. Experimental Section

### 4.1. Field Survey in Thau Lagoon

#### 4.1.1. Collection of Environmental Samples and Processing

Phytoplankton samples from Thau Lagoon (Languedoc-Roussillon, France) were collected each month from November 2013–June 2014 inside the oyster farm named Bouzigues (N  $43^{\circ}26.058'$  and E  $003^{\circ}39.878'$ ) (Figure 4). Sea water (duplicate) was collected from the sub-surface ( $-50 \text{ cm}$ ) using a pump. On the boat, 20–30 liters of water were concentrated through  $20\text{-}\mu\text{m}$  pore filters to a final volume of 50 mL (fraction  $>20 \mu\text{m}$ ). Total DNA from 1 mL of this fraction was extracted and purified according to the standard procedure of the current protocols in molecular biology, Unit 2.2.1 [64]. After purification, DNA was conserved in  $100 \mu\text{L}$  of water at  $-20^{\circ}\text{C}$  until PCR was performed.



**Figure 4.** Map showing locations of the sampling stations in Thau Lagoon.

#### 4.1.2. Dynamics of *Alexandrium catenella*

Species belonging to the *Alexandrium tamarensis* complex are often difficult to separate. This complex is composed of three morphospecies, namely *A. fundyense* (Balech), *Alexandrium catenella* (Whedon & Kofoid) Balech and *A. tamarensis* (Lebour) Balech. Taxa, such as *A. catenella* and *A. tamarensis*, are considered as cryptic species [65]. Recently, John *et al.* [66] proposed to rename *A. catenella* (Whedon & Kofoid) Balech *Alexandrium pacificum* (Litaker). However, this proposition is still under debate [67]. In Thau Lagoon, Genovesi *et al.* [36] showed the simultaneous presence of the toxic *A. catenella* and the non-toxic *A. tamarensis* [68] that belong to Group IV and Group III, respectively. By microscopic observation, *A. catenella* cannot be formally identified; molecular identification is therefore the most accurate method to identify this species accurately in a preserved natural samples.

From field-preserved Thau water samples, *Alexandrium catenella/tamarensis* abundance (cells·L<sup>-1</sup>) was determined using photonic microscopy counting. As specified above, based on the morphological characteristics, it was difficult to discriminate *A. catenella* from *A. tamarensis* in the field samples. To specifically identify and quantify the presence of *A. catenella* in water, we performed a quantitative method using the primers FACAT28 and RACATAM269 from Genovesi *et al.* [36] that target specifically the 18S–28S rRNA ITS region of *A. catenella*. Briefly, PCR amplifications were performed in the Light Cycler 480 (Roche Diagnostics GmbH, Mannheim, Germany). In short, the following components were mixed: 1 µM of each primer (3.33 µM) and 3 µL of reaction mix (Light Cycler<sup>®</sup> 480 SYBR<sup>®</sup> Green I Master mix, Roche Diagnostics GmbH, Mannheim, Germany) in a final volume of 5 µL. DNA (1 µL) was added as the PCR template to the mix, and the following run protocol was used: initial denaturation at 95 °C for 5 min; 95 °C for 10 s; 58 °C for 10 s; 72 °C for 10 s. A subsequent melting temperature curve was performed between 65 °C and 97 °C with a heating rate of 0.11 °C/s, a continuous fluorescence measurement and a cooling step to 40 °C. Each PCR was performed in duplicate. To determine the qPCR efficiency, the standard curve was generated using five serial dilutions (1:1, 1:3, 1:7, 1:15, 1:31) of a DNA sample of the *A. catenella* ACT03 strain. Before quantitative PCR analysis, a significant linear relationship ( $R^2 = 0.99$ ) was demonstrated between the cycle threshold (Ct) and the logarithm of the initial concentration of *A. catenella* ACT03 from 4 to 4000 cells·L<sup>-1</sup> (the detection limit). Moreover, the PCR product analysis on agarose gel and by melting curve revealed a unique lane (240 bp) and a unique peak (80 °C), respectively, indicating the formation of a single PCR product with no artifacts (data not shown).

#### 4.1.3. Oyster Mortality

Oyster mortality was monitored in Thau Lagoon from November 2013–June 2014 by the French Shellfish Observatory Network [69]. Oysters were natural diploid *Crassostrea gigas* juveniles collected in 2012 and 2013 in the basin of Arcachon, France (initial average shell length ≤30 mm.). Oysters were placed inside an oyster farm, called Marseillan East (N 43°36.461' and E 003°55.394', Marseillan, Languedoc-Roussillon, France), that corresponds to a representative site of oyster mortalities that occur throughout the lagoon (Figure 4). In fact, mortalities were shown to affect different oyster farms within Thau Lagoon (in Marseillan and Bouzigues) identically in terms of kinetics and magnitude [23].

#### 4.1.4. Oyster Biotxin Contamination

To monitor contamination by PSTs, juvenile oysters (Batch 2013.2) produced at the Institut Français de Recherche pour l'Exploitation de la Mer (IFREMER) Hatchery in Bouin, France (initial average shell length  $30 \pm 0.4$  mm), were immersed in Thau Lagoon at the oyster farm named Bouzigues (N 43°26.058' and E 003°39.878') in November 2013 (Figure 4). Five juvenile oysters were randomly collected each month from November 2013–June 2014. Pooled tissues of oysters were frozen at −20 °C until toxin extraction and subsequent analyzes were performed.



## 4.2. Experimental Infections

### 4.2.1. Oysters

Oysters used for experimental infections (Batches 2013.2 and 2014.2) were diploid *Crassostrea gigas* juveniles produced at the IFREMER Hatchery in Bouin, France (initial average shell length  $30 \pm 0.4$  mm).

### 4.2.2. Algae Production

The experiments were carried out with a toxic strain of *Alexandrium catenella* (ACT03), a non-PST producing strain, *Alexandrium tamarense* (ATT07), and the haptophyte, *Tisochrysis lutea*, which is considered a foraging alga. ACT03 and ATT07 were isolated from Thau Lagoon in 2003 and 2007, respectively. Examination of the morphology of the studied strain ACT03 clearly showed the absence of the ventral pore between the plates 1' and 4' and the ability to form chains of up to eight cells during the exponential growth phase. This corresponds to the description of *Alexandrium catenella* (Whedon & Kof) Balech. In contrast, cells from the ATT07 culture showed clearly the presence of this previously-described ventral pore, and these are always observed in single or paired cells. Analysis of the nuclear rRNA fragment, including ITS1, the 5.8S rRNA gene, ITS2, and the D1/D2 28S rRNA genes revealed that the strain ACT03 belonged to the *A. catenella* species from Group IV (temperate Asian clade) and that the strain ATT07 belongs to *A. tamarense* (Group III) [36]. Dinoflagellates were grown at 20 °C under cool-white fluorescent illumination (100  $\mu$ moles photons/m<sup>2</sup>/s) in batch cultures, using a 12 h:12 h light:dark cycle. The enriched natural sea water (ENSW) culture medium was carried out following Harrison *et al.* [70] and was characterized by a salinity of 35. For the experiments, algae populations were in their exponential growth phase.

### 4.2.3. Pathogenic Bacterial Strain

Bacteria for infection were prepared as follows. A colony of *Vibrio tasmaniensis* LGP32 wild-type previously isolated on a Zobell media Petri dish was grown overnight at 20 °C in liquid medium under agitation (150 rpm). Cells were then washed three times with sterile seawater (SSW) by centrifugation (10 min, 1000 g, 20 °C).

### 4.2.4. Experimental Design

Two independent experimental exposures to *Alexandrium catenella* were carried out according to the protocol described by Rolland *et al.* [47]. Briefly, after 10 days of acclimatization without feeding, *Crassostrea gigas* juveniles were randomly placed into tanks (50 individuals per tank, 3 tanks per condition) containing 6 liters of filtered (0.2  $\mu$ m) seawater thermo-regulated at 22 °C. Then, oysters were subjected to different treatments, including exposure for 24 h to the toxic *A. catenella* and the non-toxic *Alexandrium tamarense* or *Tisochrysis lutea* at an initial concentration of  $2 \times 10^6$  cells·L<sup>-1</sup>, similar to the conditions observed during a natural bloom in Thau Lagoon [38]. Over the experiment, the algae concentration was maintained between  $1 \times 10^6$  and  $3 \times 10^6$  cells·L<sup>-1</sup> by adding algae to the sea water tanks. In control tanks, no algae were added. After a 24 h exposure, each batch of oysters received a 30% lethal dose (LD<sub>30</sub>) of bacteria determined at Day 7. For that, each juvenile was injected with one dose of *V. tasmaniensis* LGP32 (50  $\mu$ L/animal;  $2 \times 10^8$  and  $1 \times 10^9$  for Batches 2013.2 and 2014.2, respectively) into its adductor muscle. Control oysters were injected with 50  $\mu$ L of sterile seawater (SSW). The mortality of juvenile oysters was monitored daily over 10 days (Figure 5). To determine the level of PST contamination of oysters, dead animals were collected each day for the duration of the experiment. Pooled tissues were frozen at -20 °C until the extraction of the toxin was carried out.

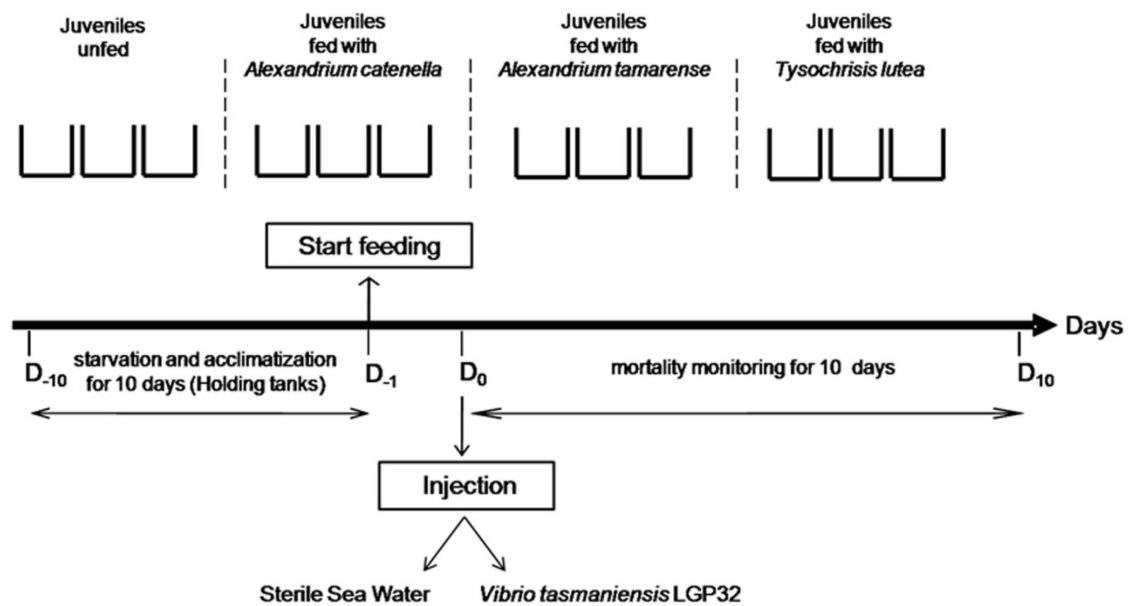


Figure 5. Laboratory experimental design.

#### 4.3. Neurotoxins Analysis

To extract the PSTs, 5 mL of 0.1 N hydrochloric acid were added, and the samples were mixed with a high-speed homogenizer (15,000 rpm) for 2 min. The pH was adjusted between 2.0 and 4.0, then the samples were centrifuged at 4200 g for 10 min at 4 °C. The supernatants were filtered on 10-kDa polyethersulfone (PES) filters, and the toxin content was analyzed using the liquid chromatography with fluorescence detection (LC/FD) PSP toxin analyses method of Van De Riet [71]. The toxins GTXs, dc-GTXs, dc-STXs and STXs were separated using a reverse chromatography column (Zorbax Bonus RP, 3.5  $\mu$ M, 4.6  $\times$  150 mm, Agilent Technologies, Massy, France) with a flow rate of 0.8 mL  $\cdot$  min<sup>-1</sup>. The eluent pH and/or column temperature were optimized to separate dc-GTX3/GTX5/dc-GTX-2 and C1/C2. The toxin concentrations were determined using certified standards provided by CNRC (Halifax, NS, Canada).

#### 4.4. Statistical Analysis

The non-parametric Kaplan-Meier test was used to estimate Wilcoxon and Tarone-Ware values for comparing the experimental survival curves [72]. A confidence limit of 95% was used to test the significance of differences between groups. Data for the same experiment groups were pooled since there were no significant differences ( $p > 0.05$ ). Values are the mean  $\pm$  SD from two independent experiments \*  $p < 0.05$ , \*\*  $p < 0.01$ , \*\*\*  $p < 0.001$ .

**Supplementary Materials:** The following figure is available online at [www.mdpi.com/2072-6651/8/1/24/s1](http://www.mdpi.com/2072-6651/8/1/24/s1). Figure S1. Variation of cell concentration in tanks during the experiments. *Alexandrium catenella* (blue); *Alexandrium tamarense* (red); *Tisochrysis lutea* (green).

**Acknowledgments:** We are grateful to Delphine Destoumieux-Garzon for critical reading of the manuscript and to Marc Leroy and Georges Rovillon for technical assistance. This work received financial support from the Ecosphère Continentale et Côtière (EC2CO) Microbien projects (Apotox 2012–2014 and Intervibrio 2013–2015). Thanks to the University of Montpellier (Ecole Doctorale GAIA: Biodiversité, Agriculture, Alimentation, Environnement, Terre, Eau) for funding Celina Abi-Khalil PhD and to IFREMER for the postdoctoral grant held by Carmen Lopez-Joven.

**Author Contributions:** M.L. and J.L.R. conceived of and designed the experiments. C.A.K., C.L.J., E.A. and J.L.R. performed the experiments. C.A.K. and J.L.R. analyzed the data. C.A.K., C.L.J., E.A., V.S. and Z.A. contributed reagents/materials/analysis tools. C.A.K., M.L. and J.L.R. wrote the paper.

**Conflicts of Interest:** The authors declare no conflict of interest.

## References

1. Sabry, R.C.; da Silva, P.M.; Gesteira, T.C.V.; Pontinha, V.D.; Magalhaes, A.R.M. Pathological study of oysters *Crassostrea gigas* from culture and *C. rhizophorae* from natural stock of Santa Catarina Island, SC, Brazil. *Aquaculture* **2011**, *320*, 43–50. [[CrossRef](#)]
2. Burge, C.A.; Judah, L.R.; Conquest, L.L.; Griffin, F.J.; Cheney, D.P.; Suhrbier, A.; Vadopalas, B.; Olin, P.G.; Renault, T.; Friedman, C.S. Summer seed mortality of the Pacific oyster, *Crassostrea gigas* Thunberg grown in Tomales Bay, California, USA: The influence of oyster stock, planting time, pathogens, and environmental stressors. *J. Shellfish Res.* **2007**, *26*, 163–172. [[CrossRef](#)]
3. Nicolas, J.L.; Ansquer, D.; Cochard, J.C. Isolation and characterization of a pathogenic bacterium specific to Manila clam *Tapes-philippinarum* larvae. *Dis. Aquat. Org.* **1992**, *14*, 153–159. [[CrossRef](#)]
4. Jenkins, C.; Hick, P.; Gabor, M.; Spiers, Z.; Fell, S.A.; Gu, X.N.; Read, A.; Go, J.; Dove, M.; O'Connor, W.; et al. Identification and characterisation of an ostreid herpes virus-1 microvariant (OsHV-1 mu-var) in *Crassostrea gigas* (Pacific oysters) in Australia. *Dis. Aquat. Org.* **2013**, *105*, 109–126. [[CrossRef](#)] [[PubMed](#)]
5. Keeling, S.E.; Brosnahan, C.L.; Williams, R.; Gias, E.; Hannah, M.; Bueno, R.; McDonald, W.L.; Johnston, C. New Zealand juvenile oyster mortality associated with ostreid herpesvirus 1—An opportunistic longitudinal study. *Dis. Aquat. Org.* **2014**, *109*, 231–239. [[CrossRef](#)] [[PubMed](#)]
6. Domeneghetti, S.; Varotto, L.; Civettini, M.; Rosani, U.; Stauder, M.; Pretto, T.; Pezzati, E.; Arcangeli, G.; Turolla, E.; Pallavicini, A.; et al. Mortality occurrence and pathogen detection in *Crassostrea gigas* and *Mytilus galloprovincialis* close-growing in shallow waters (Goro lagoon, Italy). *Fish Shellfish Immun.* **2014**, *41*, 37–44. [[CrossRef](#)] [[PubMed](#)]
7. Soletchnik, P.; le Moine, O.; Faury, N.; Razet, D.; Geairon, P.; Gouletquer, P. Summer mortality of the oyster in the Bay Marennes-Oleron: Spatial variability of environment and biology using a geographical information system (GIS). *Aquat. Living Resour.* **1999**, *12*, 131–143. [[CrossRef](#)]
8. Berthelin, C.; Kellner, K.; Mathieu, M. Storage metabolism in the Pacific oyster (*Crassostrea gigas*) in relation to summer mortalities and reproductive cycle (west coast of France). *Comp. Biochem. Physiol.* **2000**, *125*, 359–369. [[CrossRef](#)]
9. Garnier, M.; Labreuche, Y.; Garcia, C.; Robert, M.; Nicolas, J.L. Evidence for the involvement of pathogenic bacteria in summer mortalities of the Pacific oyster *Crassostrea gigas*. *Microb. Ecol.* **2007**, *53*, 187–196. [[CrossRef](#)] [[PubMed](#)]
10. Gay, M.; Renault, T.; Pons, A.M.; le Roux, F. Two vibrio splendidus related strains collaborate to kill *Crassostrea gigas*: Taxonomy and host alterations. *Dis. Aquat. Org.* **2004**, *62*, 65–74. [[CrossRef](#)] [[PubMed](#)]
11. Lacoste, A.; Jalabert, F.; Malham, S.; Cuffe, A.; Gelebart, F.; Cordevant, C.; Lange, M.; Poulet, S.A. A *Vibrio splendidus* strain is associated with summer mortality of juvenile oysters *Crassostrea gigas* in the Bay of Morlaix (North Brittany, France). *Dis. Aquat. Org.* **2001**, *46*, 139–145. [[CrossRef](#)] [[PubMed](#)]
12. Le Roux, F.; Binesse, J.; Saulnier, D.; Mazel, D. Construction of a *Vibrio splendidus* mutant lacking the metalloprotease gene vsm by use of a novel counterselectable suicide vector. *Appl. Environ. Microbiol.* **2007**, *73*, 777–784. [[CrossRef](#)] [[PubMed](#)]
13. Lemire, A.; Goudenege, D.; Versigny, T.; Petton, B.; Calteau, A.; Labreuche, Y.; le Roux, F. Populations, not clones, are the unit of vibrio pathogenesis in naturally infected oysters. *ISME J.* **2015**, *9*, 1523–1531. [[CrossRef](#)] [[PubMed](#)]
14. Duperthuy, M.; Binesse, J.; le Roux, F.; Romestand, B.; Caro, A.; Got, P.; Givaudan, A.; Mazel, D.; Bachere, E.; Destoumieux-Garzon, D. The major outer membrane protein OmpU of *Vibrio splendidus* contributes to host antimicrobial peptide resistance and is required for virulence in the oyster *Crassostrea gigas*. *Environ. Microbiol.* **2010**, *12*, 951–963. [[CrossRef](#)] [[PubMed](#)]
15. Duperthuy, M.; Schmitt, P.; Garzon, E.; Caro, A.; Rosa, R.D.; le Roux, F.; Lautredou-Audouy, N.; Got, P.; Romestand, B.; de Lorgeril, J.; et al. Use of OmpU porins for attachment and invasion of *Crassostrea gigas* immune cells by the oyster pathogen *Vibrio splendidus*. *Proc. Natl. Acad. Sci. USA* **2011**, *108*, 2993–2998. [[CrossRef](#)] [[PubMed](#)]
16. Vanhove, A.S.; Duperthuy, M.; Charriere, G.M.; le Roux, F.; Goudenege, D.; Gourbal, B.; Kieffer-Jaquinod, S.; Coute, Y.; Wai, S.N.; Destoumieux-Garzon, D. Outer membrane vesicles are vehicles for the delivery of *Vibrio tasmaniensis* virulence factors to oyster immune cells. *Environ. Microbiol.* **2015**, *17*, 1152–1165. [[CrossRef](#)] [[PubMed](#)]

17. Segarra, A.; Pepin, J.F.; Arzul, I.; Morga, B.; Faury, N.; Renault, T. Detection and description of a particular Ostreid herpesvirus 1 genotype associated with massive mortality outbreaks of Pacific oysters, *Crassostrea gigas*, in France in 2008. *Virus Res.* **2010**, *153*, 92–99. [[CrossRef](#)] [[PubMed](#)]
18. Martenot, C.; Oden, E.; Travaille, E.; Malas, J.P.; Houssin, M. Detection of different variants of Ostreid Herpesvirus 1 in the Pacific oyster, *Crassostrea gigas* between 2008 and 2010. *Virus Res.* **2011**, *160*, 25–31. [[CrossRef](#)] [[PubMed](#)]
19. Garcia, C.; Thebault, A.; Degremont, L.; Arzul, I.; Miossec, L.; Robert, M.; Chollet, B.; Francois, C.; Joly, J.P.; Ferrand, S.; *et al.* Ostreid herpes virus1 detection and relationship with *Crassostrea gigas* spat mortality in France between 1998 and 2006. *Vet. Res.* **2011**, *42*, 416–417. [[CrossRef](#)] [[PubMed](#)]
20. Samain, J.F. Review and perspectives of physiological mechanisms underlying genetically-based resistance of the Pacific oyster *Crassostrea gigas* to summer mortality. *Aquat. Living Resour.* **2011**, *24*, 227–236. [[CrossRef](#)]
21. Jolivel, A.; Elodie, F. Statistical Analysis of Oyster mortality data Acquired by the National Observatory shellfish. Available online: <http://archimer.ifremer.fr/doc/00130/24095/> (accessed on 3 December 2015).
22. Pernet, F.; Barret, J.; le Gall, P.; Corporeau, C.; Degremont, L.; Lagarde, F.; Pepin, J.F.; Keck, N. Mass mortalities of Pacific oysters *Crassostrea gigas* reflect infectious diseases and vary with farming practices in the Mediterranean Thau lagoon, France. *Aquac. Environ. Interact.* **2012**, *2*, 215–237. [[CrossRef](#)]
23. Pernet, F.; Lagarde, F.; Jeanne, N.; Daigle, G.; Barret, J.; le Gall, P.; Quere, C.; D'orbcastel, E.R. Spatial and Temporal Dynamics of Mass Mortalities in Oysters Is Influenced by Energetic Reserves and Food Quality. *PLoS ONE* **2014**. [[CrossRef](#)] [[PubMed](#)]
24. Anderson, D.M.; Alpermann, T.J.; Cembella, A.D.; Collos, Y.; Masseret, E.; Montresor, M. The globally distributed genus *Alexandrium*: Multifaceted roles in marine ecosystems and impacts on human health. *Harmful Algae* **2012**, *14*, 10–35. [[CrossRef](#)] [[PubMed](#)]
25. Scholin, C.A.; Herzog, M.; Sogin, M.; Anderson, D.M. Identification of group- and strain-specific genetic markers for globally distributed *Alexandrium* (Dinophyceae). Sequence analysis of LSU rRNA gene. *J. Phycol.* **1994**, *30*, 744–754. [[CrossRef](#)]
26. Córdova, J.L.; Müller, I. Use of PCR and partial sequencing of the large-subunit rRNA gene to indentify *Alexandrium catenella* (Dinophyceae) from the South of Chile. *Harmful Algae* **2002**, *1*, 343–350. [[CrossRef](#)]
27. MacKenzie, L.; de Salas, M.; Adamson, J.; Beuzenberg, V. The dinoflagellate genus *Alexandrium* (Halim) in New Zealand coastal waters: Comparative morphology, toxicity and molecular genetics. *Harmful Algae* **2004**, *3*, 71–92. [[CrossRef](#)]
28. Adachi, M.; Sako, Y.; Ishida, Y. Analyses of *Alexandrium* (Dinophyceae) species using sequences of the 5.8S ribosomal DNA and internal transcribed spacer regions. *J. Phycol.* **1996**, *32*, 424–432. [[CrossRef](#)]
29. Yeung, P.K.K.; Wong, F.T.W.; Wong, J.T.Y. Large subunit rDNA sequences from *Alexandrium catenella* strains isolated during algal blooms in Hong Kong. *J. Appl. Phycol.* **2002**, *14*, 147–150. [[CrossRef](#)]
30. Vila, M.; Garcés, E.; Maso, M.; Camp, J. Is the distribution of the toxic dinoflagellates *Alexandrium catenella* expanding along the NW Mediterranean coast? *Mar. Ecol. Prog. Ser.* **2001**, *23*, 497–514. [[CrossRef](#)]
31. Penna, A.; Garcés, E.; Vila, M.; Giacobbe, M.G.; Fraga, S.; Luglie, A.; Bravo, I.; Bertozzini, E.; Vernesi, C. *Alexandrium catenella* (Dinophyceae), a toxic ribotype expanding in the NW Mediterranean sea. *Mar. Biol.* **2005**, *148*, 13–23. [[CrossRef](#)]
32. Garcés, E.; Maso, M.; Camp, J.A. Recurrent and localized dinoflagellate bloom in a Mediterranean beach. *J. Plankton Res.* **1999**, *21*, 2373–2391. [[CrossRef](#)]
33. Bravo, I.; Vila, M.; Maso, M.; Figueroa, R.I.; Ramilo, I. *Alexandrium catenella* and *Alexandrium minutum* blooms in the Mediterranean Sea: Toward the identification of ecological niches. *Harmful Algae* **2008**, *7*, 515–522. [[CrossRef](#)]
34. Abadie, E.; Amzil, Z.; Belin, C.; Comps, M.A.; Elzière-Papayanni, P.; Lassus, P.; le Bec, C.; Baut, C.M.-L.; Nezan, E.; Poggi, R. Contamination de l'étang de Thau par *Alexandrium tamarense*. Available online: <http://www.ifremer.fr/docelec/doc/1999/rapport-884.pdf> (accessed on 3 December 2015).
35. Lilly, E.L.; Kulis, D.M.; Gentien, P.; Anderson, D.M. Paralytic shellfish poisoning toxins in France linked to a human-introduced strain of *Alexandrium catenella* from the western Pacific: Evidence from DNA and toxin analysis. *J. Plankton Res.* **2002**, *24*, 443–452. [[CrossRef](#)]

36. Genovesi, B.; Shin-Grzebyk, M.S.; Grzebyk, D.; Laabir, M.; Gagnaire, P.A.; Vaquer, A.; Pastoureaud, A.; Lasserre, B.; Collos, Y.; Berrebi, P.; *et al.* Assessment of cryptic species diversity within blooms and cyst bank of the *Alexandrium tamarense* complex (Dinophyceae) in a Mediterranean lagoon facilitated by semi-multiplex PCR. *J. Plankton Res.* **2011**, *33*, 405–414. [[CrossRef](#)]
37. Laabir, M.; Amzil, Z.; Lassus, P.; Masseret, E.; Tapilatu, Y.; de Vargas, R.; Grzebyk, D. Viability, growth and toxicity of *Alexandrium catenella* and *Alexandrium minutum* (Dinophyceae) following ingestion and gut passage in the oyster *Crassostrea gigas*. *Aquat. Living Resour.* **2007**, *20*, 51–57. [[CrossRef](#)]
38. Laabir, M.; Jauzein, C.; Genovesi, B.; Masseret, E.; Grzebyk, D.; Cecchi, P.; Vaquer, A.; Perrin, Y.; Colos, Y. Influence of temperature, salinity and irradiance on the growth and cell yield of the harmful red tide dinoflagellate *Alexandrium catenella* colonizing Mediterranean waters. *J. Plankton Res.* **2011**, *33*, 1550–1563. [[CrossRef](#)]
39. Masselin, P.; Amzil, Z.; Abadie, E.; Nézan, E.; le Bec, C.; Chiantella, C.; Truquet, P. Paralytic shellfish poisoning on the French Mediterranean coast in the autumn 1998: *Alexandrium tamarense* complex (Dinophyceae) as causative agent. In *Harmful Algae Blooms*; Hallegraeff, G.M., Blackburn, S.I., Bolch, C.J., Lewis, R.J., Eds.; IOC-UNESCO: Paris, France, 2000; pp. 407–441.
40. Twarog, B.M.; Hidaka, T.; Yamaguchi, H. Resistance to tetrodotoxin and saxitoxin in nerves of bivalves mollusks: A possible correlation with paralytic shellfish poisoning. *Toxicon* **1972**, *10*, 273–278. [[CrossRef](#)]
41. Shumway, S.E.; Cucci, T.L. The effects of the toxic dinoflagellate *Protogonyaulax tamarensis* on the feeding and behavior of bivalve molluscs. *Aquat. Toxicol.* **1987**, *10*, 9–27. [[CrossRef](#)]
42. Shumway, S.E. A review of the effects of algal blooms on shellfish and aquaculture. *J. World. Aquac. Soc.* **1990**, *21*, 65–104. [[CrossRef](#)]
43. Bricelj, V.M.; Connell, L.; Konoki, K.; MacQuarrie, S.P.; Scheuer, T.; Catterall, W.A.; Trainer, V.L. Sodium channel mutation leading to saxitoxin resistance in clams increases risk of PSP. *Nature* **2005**, *434*, 763–767. [[CrossRef](#)] [[PubMed](#)]
44. Bardouil, M.; Bohec, M.; Cormerais, M.; Bougrier, S.; Lassus, P. Experimental study of the effects of a toxic microalgal diet on feeding of the oyster *Crassostrea gigas* Thunberg. *J. Shellfish Res.* **1993**, *1*, 417–422.
45. Wildish, D.; Lassus, P.; Martin, J.; Saulnier, A.; Bardouil, M. Effect of the PSP-causing dinoflagellate, *Alexandrium* sp. on the initial feeding response of *Crassostrea gigas*. *Aquat. Living Resour.* **1998**, *11*, 35–43. [[CrossRef](#)]
46. Lassus, P.; Baron, R.; Garen, P.; Truquet, P.; Masselin, P.; Bardouil, M.; Leguay, D.; Amzil, Z. Paralytic shellfish poison outbreaks in the Penze estuary: Environmental factors affecting toxin uptake in the oyster, *Crassostrea gigas*. *Aquat. Living Resour.* **2004**, *17*, 207–214. [[CrossRef](#)]
47. Rolland, J.L.; Pelletier, K.; Masseret, E.; Rieuvilleneuve, F.; Savar, V.; Santini, A.; Amzil, Z.; Laabir, M. Paralytic toxins accumulation and tissue Expression of  $\alpha$ -amylase and lipase genes in the pacific oyster *Crassostrea gigas* fed with the neurotoxic dinoflagellate *Alexandrium catenella*. *Mar. Drugs* **2012**, *10*, 2519–2534. [[CrossRef](#)] [[PubMed](#)]
48. Gueguen, M.; Bardouil, M.; Baron, R.; Lassus, P.; Truquet, P.; Massardier, J.; Amzil, Z. Detoxification of Pacific oyster *Crassostrea gigas* fed on diets of *Skeletonema costatum* with and without silt, following PSP contamination by *Alexandrium minutum*. *Aquat. Living Resour.* **2008**, *21*, 13–20. [[CrossRef](#)]
49. Medhioub, W.; Lassus, P.; Truquet, P.; Bardouil, M.; Amzil, Z.; Séchet, V.; Sibat, M.; Soudant, P. Physiological responses of *Crassostrea gigas* when exposed to the toxic dinoflagellates *Alexandrium ostenfeldii*: Toxin uptake and detoxification. *Aquaculture* **2012**, *358*, 108–115. [[CrossRef](#)]
50. Hegaret, H.; Wikfors, G.H.; Soudant, P.; Lambert, C.; Shumway, S.E.; Berard, J.B.; Lassus, P. Toxic dinoflagellates (*Alexandrium fundyense* and *A. catenella*) have minimal apparent effect on oyster hemocytes. *Mar. Biol.* **2007**, *152*, 441–447. [[CrossRef](#)]
51. Hegaret, H.; da Silva, P.M.; Wikfors, G.H.; Haberkorn, H.; Shumway, S.E.; Soudant, P. *In vitro* interactions between several species of harmful algae and haemocytes of bivalve mollusks. *Cell Biol. Toxicol.* **2011**, *27*, 249–266. [[CrossRef](#)] [[PubMed](#)]
52. Mello, D.F.; da Silva, P.M.; Barracco, M.A.; Soudant, P.; Hegaret, H. Effects of the dinoflagellates *Alexandrium minutum* and its toxin (saxitoxin) on the functional activity and gene expression of *Crassostrea gigas* hemocytes. *Harmful Algae* **2013**, *26*, 45–51. [[CrossRef](#)]



53. Medhioub, W.; Ramondenc, S.; Vanhove, A.; Vergnes, A.; Masseret, E.; Savar, V.; Amzil, Z.; Laabir, M.; Rolland, J.L. Exposure to the Neurotoxic Dinoflagellate *Alexandrium catenella* induces apoptosis of the oyster *Crassostrea gigas* hemocytes. *Mar. Drugs* **2013**, *11*, 4799–4814. [[CrossRef](#)] [[PubMed](#)]
54. Lassudrie, M.; Soudant, P.; Nicolas, J.L.; Fabioux, C.; Lambert, C.; Miner, P.; le Grand, J.; Petton, B.; Hegaret, H. Interaction between toxic dinoflagellate *Alexandrium catenella* exposure and disease associated with herpesvirus OsHV-1 mu Var in Pacific oyster spat *Crassostrea gigas*. *Harmful Algae* **2015**, *45*, 53–61. [[CrossRef](#)]
55. Bachere, E.; Rosa, R.D.; Schmitt, P.; Poirier, A.C.; Merou, N.; Charriere, G.M.; Destoumieux-Garzon, D. The new insights into the oyster antimicrobial defense: Cellular, molecular and genetic view. *Fish Shellfish Immunol.* **2015**, *46*, 50–64. [[CrossRef](#)] [[PubMed](#)]
56. Zhang, L.; Li, L.; Guo, X.; Litman, G.W.; Dishaw, L.J.; Zhang, G. Massive expansion and functional divergence of innate immune genes in a protostome. *Sci. Rep.* **2015**. [[CrossRef](#)] [[PubMed](#)]
57. Fistarol, G.O.; Legrand, C.; Selander, E.; Hummert, C.; Stolte, W.; Graneli, E. Allelopathy in *Alexandrium* spp.: Effect on a natural plankton community and on algal monocultures. *Aquat. Microb. Ecol.* **2004**, *35*, 45–56. [[CrossRef](#)]
58. Oshima, Y. Chemical and enzymatic transformation of paralytic shellfish toxins in marine organisms. In *Harmful Marine Algal Blooms*; Lassus, P., Arzul, G., Erard, E., Gentien, P., Marcaillou, C., Eds.; Lavoisier/Intercept: Paris, France, 1995; pp. 475–480.
59. Suzuki, T.; Ichimi, K.; Oshima, Y.; Kamiyama, T. Paralytic shellfish poisoning (PSP) toxin profiles and short-term detoxification kinetics in mussels *Mytilus galloprovincialis* fed with the toxic dinoflagellate *Alexandrium tamarensis*. *Harmful Algae* **2003**, *2*, 201–206. [[CrossRef](#)]
60. Bougrier, S.; Lassus, P.; Bardouil, M.; Masselin, P.; Truquet, P. Paralytic shellfish poison accumulation yields and feeding time activity in the Pacific oyster (*Crassostrea gigas*) and king scallop (*Pecten maximus*). *Aquat. Living Resour.* **2003**, *16*, 347–352. [[CrossRef](#)]
61. Cembella, A.D.; Shumway, S.E.; Larocque, R. Sequestering and putative biotransformation of paralytic shellfish toxins by the sea scallop *Placopecten magellanicus*: Seasonal and special scales in natural populations. *J. Exp. Mar. Biol. Ecol.* **2005**, *180*, 1–22. [[CrossRef](#)]
62. Rolland, J.L.; Medhioub, W.; Vergnes, A.; Abi-khalil, C.; Savar, V.; Abadie, E.; Masseret, E.; Amzil, Z.; Laabir, M. A feedback mechanism to control apoptosis occurs in the digestive gland of the oyster *Crassostrea gigas* exposed to the paralytic shellfish toxins producer *Alexandrium catenella*. *Mar. Drugs* **2014**, *12*, 5035–5054. [[CrossRef](#)] [[PubMed](#)]
63. Petton, B.; Bruto, M.; James, A.; Labreuche, Y.; Alunno-Bruscia, M.; le Roux, F. *Crassostrea gigas* mortality in France: The usual suspect, a herpes virus, may not be the killer in this polymicrobial opportunistic disease. *Front. Microbiol.* **2015**. [[CrossRef](#)] [[PubMed](#)]
64. Ausubel, F.M.; Brent, R.; Kingston, R.E.; Moore, D.D.; Seidman, J.G.; Smith, J.A.; Struhl, K. Preparation of genomic DNA from mammalian tissue. In *Current Protocol in Molecular Biology*; John Wiley & Sons, Inc.: Hoboken, NJ, USA, 2003; Volume 1, pp. 2.2.1–2.2.3.
65. John, U.; Fensome, R.A.; Medlin, L.K. The application of a molecular clock based on molecular sequences and the fossil record to explain biogeographic distributions within the *Alexandrium tamarensis* “species complex” (Dinophyceae). *Mol. Biolog. Evol.* **2003**, *20*, 1015–1027. [[CrossRef](#)] [[PubMed](#)]
66. John, U.; Litaker, W.; Montresor, M.; Murray, S.; Brosnahan, M.L.; Anderson, D.M. Proposal to reject the name *Gonyaulax catenella* (*Alexandrium catenella*) (Dinophyceae). *Taxon* **2014**, *63*, 932–933. [[CrossRef](#)] [[PubMed](#)]
67. Wang, L.; Zhuang, Y.; Zhang, H.; Lin, X.; Lin, S. DNA barcoding species in *Alexandrium tamarensis* complex using ITS and proposing designation of five species. *Harmful Algae* **2014**, *31*, 100–113. [[CrossRef](#)]
68. Lilly, E.L.; Halanych, K.M.; Anderson, D.M. Species boundaries and global biogeography of the *Alexandrium tamarensis* complex (Dinophyceae). *J. Phycol.* **2007**, *43*, 1329–1338. [[CrossRef](#)]
69. Shellfish Observatory Network (RESCO). Ifremer, 155 rue Jean-Jacques Rousseau, 92138, Issy-les-Moulineaux, France. Available online: [http://wwwz.ifremer.fr/observatoire\\_conchylicole](http://wwwz.ifremer.fr/observatoire_conchylicole) (accessed on 3 December 2015).
70. Harrison, P.J.; Waters, R.E.; Taylor, F.J.R. A broad-spectrum artificial seawater medium for coastal and open ocean phytoplankton. *J. Phycol.* **1980**, *16*, 28–35. [[CrossRef](#)]

71. Van de Riet, J.; Gibbs, R.S.; Muggah, P.M.; Rourke, W.A.; MacNeil, J.D.; Quilliam, M.A. Liquid Chromatography Post-Column Oxidation (PCOX) Method for the Determination of Paralytic Shellfish Toxins in Mussels, Clams, Oysters, and Scallops: Collaborative Study. *J. AOAC Int.* **2011**, *94*, 1154–1176. [[PubMed](#)]
72. Kaplan, E.L.; Meier, P. Non parametric estimation for incomplete observations. *J. Am. Stat. Assoc.* **1958**, *53*, 457–481. [[CrossRef](#)]



© 2016 by the authors; licensee MDPI, Basel, Switzerland. This article is an open access article distributed under the terms and conditions of the Creative Commons by Attribution (CC-BY) license (<http://creativecommons.org/licenses/by/4.0/>).