



**HAL**  
open science

**An updated assessment of Symbiodinium spp. that associate with common scleractinian corals from Moorea (French Polynesia) reveals high diversity among background symbionts and a novel finding of clade B**

Héloïse H Rouzé, Gaël Lecellier, Denis Saulnier, Serge Planes, Yannick H Gueguen, Herman H Wirshing, Véronique Berteaux-Lecellier

► **To cite this version:**

Héloïse H Rouzé, Gaël Lecellier, Denis Saulnier, Serge Planes, Yannick H Gueguen, et al.. An updated assessment of Symbiodinium spp. that associate with common scleractinian corals from Moorea (French Polynesia) reveals high diversity among background symbionts and a novel finding of clade B. PeerJ, 2017, 5, pp.e2856. 10.7717/peerj.2856 . hal-01430294

**HAL Id: hal-01430294**

**<https://sde.hal.science/hal-01430294v1>**

Submitted on 9 Jan 2017

**HAL** is a multi-disciplinary open access archive for the deposit and dissemination of scientific research documents, whether they are published or not. The documents may come from teaching and research institutions in France or abroad, or from public or private research centers.

L'archive ouverte pluridisciplinaire **HAL**, est destinée au dépôt et à la diffusion de documents scientifiques de niveau recherche, publiés ou non, émanant des établissements d'enseignement et de recherche français ou étrangers, des laboratoires publics ou privés.

# An updated assessment of *Symbiodinium* spp. that associate with common scleractinian corals from Moorea (French Polynesia) reveals high diversity among background symbionts and a novel finding of clade B

Héloïse Rouzé<sup>1</sup>, Gaël J. Lecellier<sup>1,2,6</sup>, Denis Saulnier<sup>3</sup>, Serge Planes<sup>1</sup>, Yannick Gueguen<sup>4</sup>, Herman H. Wirshing<sup>5</sup> and Véronique Berteaux-Lecellier<sup>1,6</sup>

<sup>1</sup> PSL CRIOBE USR3278 CNRS-EPHE-UPVD, Labex CORAIL, Papetoai, Moorea, French Polynesia

<sup>2</sup> Université de Paris Saclay, Département de Biologie, Versailles-Saint Quentin, Paris, Versailles Cedex, France

<sup>3</sup> UMR241 EIO Ifremer-ILM-IRD-UPF, Labex CORAIL, Taravao, French Polynesia

<sup>4</sup> UMR5244 IHPE, CNRS-Ifremer-UM-UPVD, Université de Montpellier, Montpellier, France

<sup>5</sup> Department of Invertebrate Zoology, Smithsonian National Museum of Natural History, Washington, D.C., USA

<sup>6</sup> Current affiliation: UMR250/9220 ENTROPIE IRD-CNRS-UR, Labex CORAIL, Promenade Roger-Laroque, Noumea cedex, New Caledonia, France

## ABSTRACT

The adaptative bleaching hypothesis (ABH) states that, depending on the symbiotic flexibility of coral hosts (i.e., the ability of corals to “switch” or “shuffle” their algal symbionts), coral bleaching can lead to a change in the composition of their associated *Symbiodinium* community and, thus, contribute to the coral’s overall survival. In order to determine the flexibility of corals, molecular tools are required to provide accurate species delineations and to detect low levels of coral-associated *Symbiodinium*. Here, we used highly sensitive quantitative (real-time) PCR (qPCR) technology to analyse five common coral species from Moorea (French Polynesia), previously screened using only traditional molecular methods, to assess the presence of low-abundance (background) *Symbiodinium* spp. Similar to other studies, each coral species exhibited a strong specificity to a particular clade, irrespective of the environment. In addition, however, each of the five species harboured at least one additional *Symbiodinium* clade, among clades A–D, at background levels. Unexpectedly, and for the first time in French Polynesia, clade B was detected as a coral symbiont. These results increase the number of known coral-*Symbiodinium* associations from corals found in French Polynesia, and likely indicate an underestimation of the ability of the corals in this region to associate with and/or “shuffle” different *Symbiodinium* clades. Altogether our data suggest that corals from French Polynesia may favor a trade-off between optimizing symbioses with a specific *Symbiodinium* clade(s), maintaining associations with particular background clades that may play a role in the ability of corals to respond to environmental change.

Submitted 20 April 2016

Accepted 2 December 2016

Published 5 January 2017

Corresponding author

Héloïse Rouzé,

heloise.rouze@gmail.com

Academic editor

Xavier Pochon

Additional Information and  
Declarations can be found on  
page 15

DOI 10.7717/peerj.2856

© Copyright

2017 Rouzé et al.

Distributed under

Creative Commons CC-BY 4.0

## OPEN ACCESS

**Subjects** Biodiversity, Ecology, Marine Biology, Molecular Biology

**Keywords** Corals, French polynesia, Clade B, *Symbiodinium*, qPCR, Flexibility, Generalist, Faithful clade

## INTRODUCTION

The foundation of coral reefs is based on the symbiotic association between scleractinian corals and dinoflagellates in the genus *Symbiodinium*. Molecular phylogenetic analyses currently subdivide *Symbiodinium* into nine clades (A–I), each divided further into sub-clades or types based on various molecular techniques (reviewed in [Pochon, Putnam & Gates, 2014](#)). However, corals most commonly associate with *Symbiodinium* in clades A–D (reviewed in [Baker, 2003](#)), and, in rare cases, with members of clades F and G ([LaJeunesse, 2001](#); [Putnam et al., 2012](#); [Lee et al., 2016](#)). *Symbiodinium* is assumed to provide up to 95% of the energy required for coral metabolic activities ([Muscatine & Porter, 1977](#); [Davy, Allemand & Weis, 2012](#)), mostly due to their photosynthetic activity (i.e., production of carbohydrates). In return, the algae benefit by receiving a protected habitat from predation, and a source of inorganic nutrients derived from the host's metabolism. However, this symbiosis can break down, depending on the degree of stress tolerance of either partner, in response to various stressors that may include natural and/or anthropogenic sources (e.g., increasing seasurface temperatures, ocean acidification, and sedimentation; [Pandolfi et al., 2011](#)).

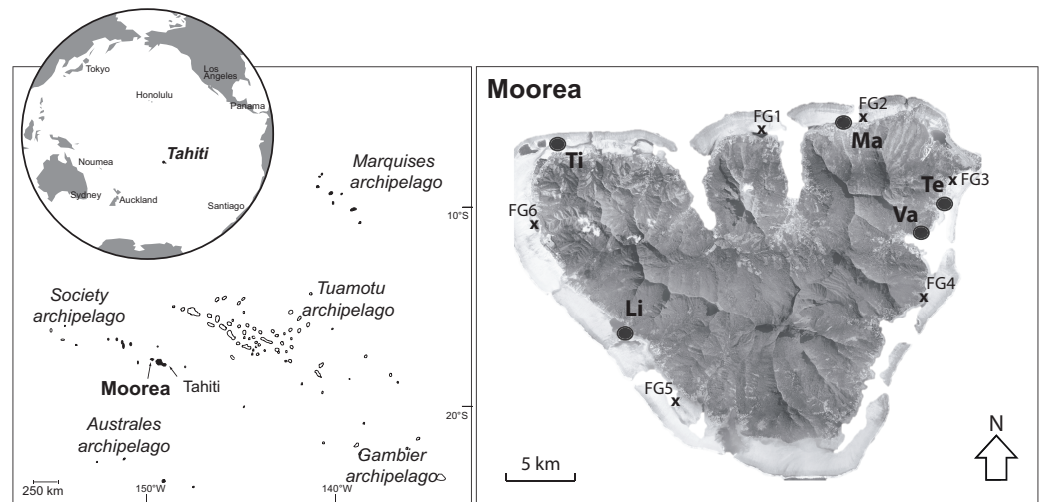
The overall fitness of a coral colony depends on the biological and functional traits of the various organisms that comprise the coral holobiont, (i.e., the coral host, its *Symbiodinium* assemblages ([Mieog et al., 2009b](#)), and other associated microorganisms (e.g., bacteria) ([Neave et al., 2016](#))). Moreover, some coral holobionts display different sensitivities to environmental conditions, which can correlate with specific biological characteristics such as morphology ([Van Woesik et al., 2011](#)). For example, the massive coral *Porites* predominately associates with a thermally tolerant *Symbiodinium*, type C15 ([Fitt et al., 2009](#); [Fabricius et al., 2011](#)), and has been shown to exhibit increased resistance to environmental stressors such as temperature anomalies and experience lower mortality and/or bleaching rates compared to those observed for branching corals such as *Acropora* and *Pocillopora* ([Penin, Vidal-Dupiol & Adjeroud, 2012](#)). To date, both *in situ* (e.g., [Rowan et al., 1997](#); [Baker, 2003](#); [Berkelmans & Van Oppen, 2006](#); [Sampayo et al., 2008](#)) and *in vitro* physiological studies (e.g., [Banaszak, 2000](#); [Kinzie et al., 2001](#); [Hennige et al., 2009](#)) suggest that *Symbiodinium* species are characterized by intrinsic physiological properties that enable them to be differentially suited for various environmental conditions.

Spatial partitioning of different *Symbiodinium* clades may occur at micro-scales within a single coral colony depending on solar irradiance, or among individual colonies across different depths ([Rowan et al., 1997](#); [Kemp et al., 2015](#)). In addition, coral-*Symbiodinium* associations may be diverse, and can include either mono or multi-clade associations ([Fabina et al., 2012](#); [Silverstein, Correa & Baker, 2012](#)). Moreover, these assorted *Symbiodinium* assemblages have been described in different coral colonies from the same species ([Cunning, Glynn & Baker, 2013](#)), during coral ontogeny ([Abrego, Van](#)

*Oppen & Willis, 2009; Little, Van Oppen & Willis, 2004*), and/or in ‘normal’ vs. ‘stressful’ environmental conditions (e.g., seawater temperature anomalies; *Berkelmans & Van Oppen, 2006*). *Symbiodinium* in clade D have been identified as the predominant algal symbiont in resistant coral colonies during and after massive bleaching events, and/or, more generally, in reefs exposed to local stressors such as sedimentation and eutrophication (*Van Oppen et al., 2001; Ulstrup & Van Oppen, 2003; LaJeunesse et al., 2010; LaJeunesse et al., 2014; Cooper et al., 2011*). These observations highlight the importance of coral-*Symbiodinium* associations with respect to thermo-tolerance (*Berkelmans & Van Oppen, 2006; Stat, Carter & Hoegh-Guldberg, 2006; LaJeunesse et al., 2009*). Consequently, it has been proposed that corals with flexible associations with various *Symbiodinium* clades (or types), such as those resulting in a range of host-*Symbiodinium* associations, may contain an ecological advantage in the context of environmental change, a concept that is encapsulated in the ‘Adaptive Bleaching Hypothesis’ (ABH) (*Buddemeier & Fautin, 1993*).

The ABH asserts that there is potential for rapid ‘adaptation’ of corals facing stressful conditions by a dynamic modification of their *Symbiodinium* community composition either by (i) the acquisition of resistant *Symbiodinium* clades from free algae present in the environment (i.e., ‘switching’) or (ii) repopulation by background pre-existing resistant *Symbiodinium* clades (i.e., ‘shuffling’). Therefore, in the context of the ABH, coral flexibility (the ability of a coral species to associate with multiple *Symbiodinium* types) is of the utmost importance, and has led to the characterization of coral hosts as either ‘specialists’ (associating with a specific *Symbiodinium* clade) or ‘generalists’ (associating with multiple *Symbiodinium* clades) (*Fabina et al., 2012; Putnam et al., 2012; Silverstein, Correa & Baker, 2012*).

The development of molecular tools with highly sensitive detection capacities such as real-time quantitative PCR (qPCR), which is up to 1,000 times more sensitive than conventional methods (e.g., cloning, DGGEs, RFLP) (*Mieog et al., 2007*), allows for the detection of background symbionts (in addition to the dominant symbionts), and provides a measurable degree of host flexibility among corals (*Silverstein, Correa & Baker, 2012*). As a result, some studies have suggested that corals may be more flexible than previously thought (*Mieog et al., 2007; Mieog et al., 2009a; Silverstein, Correa & Baker, 2012*). The goal of this study was to investigate the degree of flexibility in host-symbiont partnerships among particular coral species from the under-explored Moorea island in French Polynesia using qPCR. Coral flexibility, considered here as the ability of a coral species to associate with multiple *Symbiodinium* clades or types in different proportions, and which represents one of the main conditions of the ABH, was tested. The presence of *Symbiodinium* clades A–F was quantified among five coral species, *Acropora cytherea*, *Acropora pulchra*, *Pocillopora damicornis*, *Porites rus* and *Pavona cactus*. Although each coral species displayed a high degree of specificity to a dominant *Symbiodinium* clade, all of the coral species hosted multiple *Symbiodinium* clades in low abundance, including partnerships never recorded in French Polynesia.



**Figure 1** Map of Moorea island (Archipelago of society, French Polynesia) and the locations of the fringing reefs studied (black circles). Locations (FG) with an “x” indicate the sites investigated previously by Putnam *et al.* (2012). Vaiare (Va), Teavaro (Te), Maharepa (Ma), Tiahura (Ti) and Linareva (Li).

## MATERIALS & METHODS

### Choice of coral species

Five coral species, chosen among the most common scleractinian coral genera from the Pacific: *Pocillopora* (*P. damicornis* type  $\beta$  *sensu* Schmidt-Roach *et al.*, 2014 Genbank references KY110998–KY111024), *Acropora* (*A. cytherea* and *A. pulchra*), *Porites* (*P. rus*) and *Pavona* (*P. cactus*), were collected from a fringing reef with a depth 0.5–2.0 m off Moorea island in French Polynesia (17°30'9S, 149°50'9W) (Fig. 1). These five coral species display different biological traits, and were among corals characterized as having varying resistance during severe local bleaching events in 2002 and 2007 (Penin, Vidal-Dupiol & Adjeroud, 2012). *Acropora* is considered as the “sentinel” coral genus, described as having high sensitivity to environmental stressors (e.g., McClanahan *et al.*, 2007; Penin *et al.*, 2007; Penin, Vidal-Dupiol & Adjeroud, 2012). Conversely, the genus *Porites* was chosen for its high resistance to stress (e.g., Kayal *et al.*, 2012; Penin, Vidal-Dupiol & Adjeroud, 2012), living in a wide range of habitats around the island (e.g., sedimentary bays). Finally, the last two genera, *Pocillopora* and *Pavona*, were chosen because they are considered having intermediate degrees of sensitivity (Penin, Vidal-Dupiol & Adjeroud, 2012).

All of the coral species were sampled during the dry season between August and October 2012, *P. damicornis* ( $N = 27$ ), *P. rus* ( $N = 21$ ) and *A. cytherea* ( $N = 16$ ) were sampled in greater proportions compared to *A. pulchra* ( $N = 6$ ) and *P. cactus* ( $N = 7$ ). Sampling was performed among five contrasting fringing reefs from the lagoon of Moorea island: Maharepa (Ma) and Vaiare (Va) are exposed to anthropogenic influence, and Teavaro (Te), Linareva (Li) and Tiahura (Ti) are more isolated from human activities (Nahon *et al.*, 2013; Rouzé *et al.*, 2015).

## DNA extraction

Small coral fragments (0.5–1 cm<sup>3</sup>) were sampled at several areas from the top of each coral colony, placed directly into a tube underwater, and immediately transferred at the surface into a new 1.5 mL centrifuge tube containing 80% ethanol. All samples were stored at –20 °C until DNA extraction. Prior to extraction, all of the ethanol was discarded and the coral sample gently rinsed with sterile freshwater to eliminate all traces of mucus. This allows for better targeting of *Symbiodinium* present in the host tissues.

Total coral DNA (i.e., *Symbiodinium*, polyps, and associated micro-organisms) was extracted using a CTAB-based extraction protocol adapted from *Mieog et al. (2009a)*. To increase the efficiency of DNA extraction, coral samples were incubated in 600 µL of extraction buffer CTAB 2% (2% CTAB, 1.4 M NaCl, 20 mM EDTA pH 8, 100 mM Tris–HCl pH 8 and 20 µg/mL proteinase K). They were then exposed to 3 cryo-shock cycles (5 min in liquid nitrogen following by 10 min at ambient temperature), and incubated at 60 °C overnight while rotating. Next, the CTAB buffer was recovered and placed into a new tube containing 600 µL of chloroform/iso-amyl alcohol (24:1 vol/vol). The resulting solution was mixed thoroughly and centrifuged for 15 min at 12,000 g (4 °C). The aqueous phase was then transferred into a new tube and mixed with 600 µL of isopropanol at 0 °C, and incubated for 20 min at –20 °C. After a new round of centrifugation, the supernatant was discarded and the pellet rinsed with 500 µL of 70% ethanol. After a final centrifugation of 10 min at 12,000 g, the ethanol was removed and the DNA pellet air-dried before dilution in 100 µL sterile water (Sigma). All DNA samples were then stored at –40 °C.

## qPCR assays

### Primer set assessment

Six primer sets optimized for the amplification of nuclear ribosomal 28S in *Symbiodinium* clades A–F (*Yamashita et al., 2011*), and one coral-specific 18S primer set for the coral host (i.e., polyps) were used. The 18S coral host primers (univPolyp-18SF: 5'-ATCGATGAAGAACGCCAGCCA-3' and univPolyp-18SR: 5'-CAAGAGCGCCATTTGCGTTC-3') were designed with Primer 3 (*Untergasser et al., 2012*) from the 18S rDNA sequence alignment (276 sequences) of 18 coral species that are among the most abundant genera found in French Polynesia (*Porites* spp., *Pocillopora* spp., *Acropora* spp., *Montipora* spp., and *Pavona* spp.) as well as *Symbiodinium* clades as negative controls.

The quality of the different primer sets for qPCR was confirmed using the evaluation of indicators of specificity and efficiency. Firstly, the specificity of the symbiont and host primer sets were verified with DNA from cultured *Symbiodinium* strains (available from the BURR Collection (<http://www.nsm.buffalo.edu/Bio/burr/>); clade A: CasskB8 and Flap1, B: Pe and Flap2, C: Mp, D: A001 and A014, E: RT383 and F: Sin and Pdiv44b), and with coral DNA from various species (*Acropora*: *A. pulchra*, *A. cytherea*, *A. hyacinthus*; *Pocillopora*: *P. damicornis*, *P. verrucosa*, *P. meandrina*; *Porites* *rus*; *Pavona* *cactus*; *Montipora* spp. and *Fungia* spp.). A percentage of specificity (Sp: expected with target/unexpected with non-target region) of the symbiont-specific primer sets was calculated according to the formula:  $Sp = 1 - \sum (100/2^{(C_{ti}-C_{tx})})$ , where  $C_{ti}$  and  $C_{tx}$  are  $C_t$  obtained from a

specific primer set (Cti) and from other primer sets (Ctx) on the same target DNA sample. Secondly, the efficiency of the different primer sets was estimated from the standard curve method based on the log-linear regression of the Ct values with 10-fold serial dilutions of the DNA over 7 concentrations. For both *Symbiodinium* and the coral host, the matrix for dilution was based on a series of known DNA concentrations. In order to mimic multiclade associations and/or the DNA complexity, the matrix was performed by a mixture of several DNA extracts equally concentrated for *Symbiodinium* (70 ng of each clades A–F; one reference strain per clade; clade A: CasskB8, B: Pe, C: Mp, D: A001, E: RT383 and F: Sin), and the coral host (on 1/mixture multi-specific: 50 ng of the ten coral species mentioned above or 2/mixture mono-specific: 50 ng of five DNAs from the same coral species for *P. damicornis*, *P. rus* or *A. cytherea*). Additionally, for *Symbiodinium* the standard curve method was applied on a series of known 28S rDNA copy numbers (amplified DNA for clades A–F; [Supplemental Information 1](#)), or a series of known cell densities of clade A, C and D isolated from the coral hosts (clade B was not available; [Supplemental Information 1](#)). Percentage of efficiency (100% of efficiency indicates that the amount of PCR product doubles during each cycle) was the ratio of the observed slope and the expected slope ( $-3.322$ ) of the log-linear regression. In addition, the standard curves of efficiency for each corresponding primer set denoted sensitivity, which corresponded to the threshold of Ct ranges to ensure an accurate amplification (i.e., the limits of the detectable log-linear range of the PCR).

### **Quantification of *Symbiodinium* in coral hosts**

In order to compare *Symbiodinium* clades amount between different coral samples, the raw number of 28S copies of each *Symbiodinium* clade (from A to F) was normalized within coral hosts to evaluate the *Symbiodinium* densities *per* sample. For each coral DNA sample, a value of polyp unit was estimated by the 18S copy quantification using the standard curve equation [Fig. S1b](#) in order to normalize the quantification of the *Symbiodinium* clades in 28S copy number, or in cell number per unit of 18S polyp.

All qPCR assays were conducted on a MX3000 Thermocycler (Stratagene) using SYBR-Green. Each reaction was performed, in a final volume of 25  $\mu\text{L}$  containing: 12.5  $\mu\text{L}$  of Brilliant<sup>®</sup> SYBR Green Master Mix reagent, 2.5  $\mu\text{L}$  of both reverse and forward primers diluted at the concentration of 4  $\mu\text{M}$ , and 10  $\mu\text{L}$  of DNA at various concentrations for standard curve analysis or at 1  $\text{ng}\cdot\mu\text{L}^{-1}$  for field sample analysis. The following run protocol was performed: 1 cycle of pre-incubation of 10 min at 95 °C; 40 cycles of amplification: 30 s at 95 °C, 1 min at 60 °C or 64 °C for *Symbiodinium* and coral host respectively, and 1 min at 72 °C; and a final step, for melting temperature curve analysis, of 1 min at 95 °C, 30 s at 60 °C and 30 s at 95 °C. Each sample was analysed twice on the same plate, as one technical replicate, and averaged when the variation between both Ct values was not exceeding 1 (if not, samples were re-processed until  $\Delta\text{Ct} \leq 1$ ). An interplate calibrator (i.e., positive control with known concentrations and Ct values: mixture of DNA from *Symbiodinium* clades A–F), tested in triplicate (one technical replicate), was added to each plate to calibrate Ct values (performed manually on the MxPro software to set the fluorescent threshold to a fixed Ct value) among different plates of coral DNA samples. Positive amplifications were

taken into account only when both technical replicates produced Ct values inferior to the estimated threshold ranges (i.e., limit sensitivity to ensure an accurate quantification; [Table S1](#)) after correction with the interplate calibrator. In addition, all melting curve analyses ensured the specificity of the amplifications ([Table S1](#)). For new partnerships between *Symbiodinium* clade(s) and coral species, we further purified the qPCR products (~100 bp) using QiaEx II Gel Extraction Kit (Qiagen GmbH, Hilden, Germany) and sequenced in both directions (GATC Biotech, Köln, Cologne, Germany).

### Statistical analysis

All statistical analyses were performed using R version 3.3.1 software (*R Core Team, 2013*). For each *Symbiodinium* clade, positively quantified in coral DNA, the symbiont/host ratio (i.e., S/H ratio) were log + 1 transformed for further analyses. Slopes, intercepts, and the Pearson correlation coefficient ( $R^2$ ) were evaluated by pairwise comparisons with Student's *t*-tests using R package RVAideMemoire version 0.9–27 (*Hervé, 2013*).

Discriminant analysis of principal components (DAPC) on S/H ratios, available for the 5 coral species, was performed in R package ade4 version 1.7–4 (*Dray & Dufour, 2007*) in order to characterize their preferential endosymbiotic assemblages and densities. Therefore, the discrimination represented by ellipses was applied through the coral species as factor.

## RESULTS

### Validation and optimization of qPCR assays

For all clade-specific primer sets, the specificity of each qPCR assay was greater than 98% ([Tables S1](#) and [S2](#)), and was characterized by a unique melting temperature ([Table S1](#)), confirming the high accuracy of each primer set to its targeted sequence. All clade-specific primers yielded a good fit linear regression with similar efficiencies close to the desired aim of 100% (95–101%; [Table S1](#)), strong linear correlations ( $R^2 > 0.985$ ; [Fig. S1](#)) between Ct and concentrations of DNA template, and no significant differences among slopes. This indicates that the increase in clade-specific *Symbiodinium* quantity is directly proportional to the number of amplification cycles regardless of whether the tests were performed on DNA from either *Symbiodinium* culture strains ([Table S1](#) and see *Yamashita et al., 2011*), purified PCR products ([Fig. S1a](#)), or from counted *Symbiodinium* cells ([Fig. S2](#)). The sensitivity of the clade-specific primers allowed two groups of primer sets to be distinguished. Pairwise comparisons of the intercepts (Student's *t*-test,  $p < 0.05$ ) between the standard regression lines of 28S amplicons ([Fig. S1a](#)) showed earlier detection of the primers specific to clades A, B, E and F ( $i = 16.36 \pm 0.39$ ; [Fig. S1a](#)) when compared with the clade-specific primers to clades C and D ( $i = 19.83 \pm 0.27$ ; [Fig. S1a](#)). From the *Symbiodinium* cell extraction, clade D sensitivity was significantly different from clades A and C (Student's *t*-tests, pairwise comparisons of slopes: D/A  $P < 0.005$  and D/C  $P = 0.104$ ; intercepts: D/A  $P < 0.001$  and D/C  $P = 0.015$ ; [Fig. S2](#)). The threshold of 28S copy number estimation for each clade A–F, evaluated by the absolute quantification of *Symbiodinium* clades, was effective under 200 copies of the gene ([Table S1](#) and [Fig. S1a](#)).

Similarly, the specificity of the coral-specific primer set was confirmed with positive amplifications from 10 coral species and no amplifications with *Symbiodinium* DNA. In

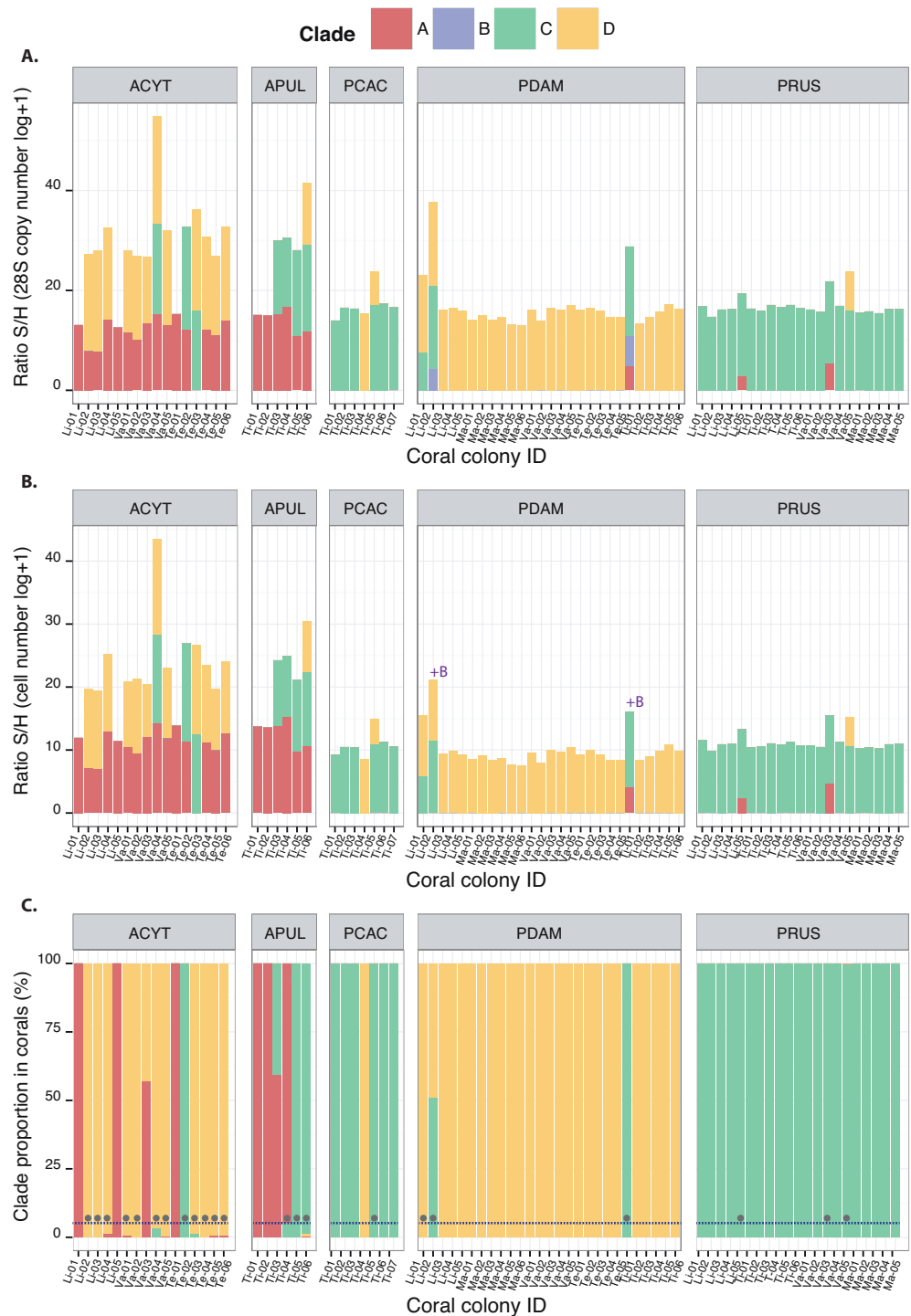


addition, the amplification of multi (mixture of 10 coral species) vs. mono-specific (mixture of *P. rus*, *P. damicornis* or *A. cytherea*) mixes with the coral-specific primer set yielded a good fit linear regression with similar efficiencies that were close to the desired aim of 100% (101%; Table S1), contained strong linear correlations ( $R^2 > 0.99$ ; Fig. S1b) between Ct and concentration of DNA template, and demonstrated no significant differences among linear correlation slopes and intercepts (Student's *t*-tests, pairwise comparisons among the 4 DNA mixes:  $P > 0.05$ ). In order to consider the higher complexity of multi-partner coral DNA, we performed and used analyses on multi-specific mixes of *Symbiodinium* and coral hosts to quantify the different *Symbiodinium* clades in coral DNA samples.

### Diversity and flexibility of dominant vs. background *Symbiodinium* clades

*Symbiodinium* clades A, C and D (among the tested clades A–F) were detected at least once in association with each of the five coral species studied, except for *P. cactus* which was never found associated with clade A (Fig. 2). The quantification of these clades either by 28S copy number or by cell density displayed similar orders of magnitudes when present, whatever the species (Figs. 2A and 2B). For some coral species, this represents novel associations for corals from Moorea: clade C for both *Acropora* species, *A. cytherea* and *A. pulchra*, clade D for *P. cactus*, and clades A and D for *P. rus* (Table 1). The corresponding 28S sequences for these novel coral-*Symbiodinium* partnerships revealed the presence of lineages within sub-clades: A13, C15, C1, and D1 (Table 1; Fig. S3 and Data S2). In addition, *Symbiodinium* clade B was detected in *P. damicornis* ( $N = 2$ ; Fig. 2), albeit in low abundances equivalent to 26 and 183 copies of 28S (4.25 and 6.21 in  $\log + 1$ , respectively Fig. 2A). However, no relationship was available to estimate this clade's cell number. The presence of clade B was confirmed by a match to a sequence within the sub-clade B1 (PDAM2\_Moo; Fig. S3 and Data S2). Two slightly different profiles in temperature melting curves were obtained with clade C amplification for *P. rus*. Their sequences showed that each profile corresponded to two distinct lineages within sub-clades (Fig. S3 and Data S2): C1 ( $T_m \sim 82.95$  °C; PRUS5\_Moo and PRUS6\_Moo; Fig. S3 and Data S2) and C15 ( $T_m \sim 83.5$  °C; PRUS3\_Moo and PRUS4\_Moo; Fig. S3 and Data S2). In subsequent analyses of the *Symbiodinium* community composition, each clade was expressed by 28S copy number per unit of coral 18S in order to cover clades A–F. The S/H ratio calculation displayed intra and inter-specific variation of the total *Symbiodinium* densities harbored within the host (Fig. 2A), either for a specific clade or from the total *Symbiodinium* density (all clade(s) included).

The occurrence of clades A, B, C, and D led to fifteen possible theoretical patterns among which nine have been observed previously, including assemblages of three clades together (Fig. 2): ACD (*A. cytherea* and *A. pulchra*), BCD (*P. damicornis*) or ABC (*P. damicornis*). However, *Symbiodinium* patterns that include clade B as either a unique clade (B) or as an additional clade (BA, BC, BD, BAD and ABCD) have never been recorded. Using the *Symbiodinium* densities (S/H ratio) within the coral host (Fig. 2C), relative proportions were determined, and allowed for their classification as either dominant (>5%) or background clade(s) ( $\leq 5\%$ ; Table 2). *Symbiodinium* clade B, only detected in *P. damicornis*, was



**Figure 2** Quantitative composition of different *Symbiodinium* clades observed in association with ACYT: *A. cytherea*, APUL: *A. pulchra*, PCAC: *P. cactus*, PDAM: *P. damicornis* and PRUS: *P. rus* based on: (A) 28S copy number estimation (B) cell number estimation and (C) clade proportions within coral hosts. The grey circles represent the presence of background clades under a 5% threshold (dashed line). Coral IDs are indicated under each histogram.

**Table 1** Comparative census of *Symbiodinium* clades and types associated with common coral species from Moorea (*A. cytherea*, *A. pulchra*, *P. damicornis*, *P. cactus*, and *P. rus*) detected in a previous report by Putnam et al., 2012 vs. the present study.

Coral species	Previous report [1]		Clades	Present study * Type
	Clade(s)	Type		
<i>A. cytherea</i>	A, D	A1, D1	A, C*, D	C1*
<i>A. pulchra</i>	A, D	A1, D1	A, C*, D	ND
<i>P. damicornis</i>	A, C, D	DA, A1, C15	A, B*, C, D	B1*
<i>P. rus</i>	C	C15	A*, C, D*	A13*, D1*, C15, C1*
<i>P. cactus</i>	C	C1, C3, C45	C, D*	C1, D1*

**Notes.**

\*novel detected *Symbiodinium* clade/type for the listed coral species from this study.

ND, no data.

always characterized as background regardless of the clade pattern (0.0002–0.0009% of the *Symbiodinium* communities; Table 2), and was systematically associated with at least clade C. All of the other three clades (A, C and D) were observed at least once as background clades, depending on the species and on the clade pattern. For example, clade A was occasionally found as background in *P. rus* with an AC-pattern (0.0001% within Li-05 and 0.002% within Va-03), and was frequently observed as background in *A. cytherea* (<2%; Table 2). Clade D was found as background in *P. rus* (0.026% within Va-05) or *P. cactus* (0.003% within Ti-05) with a CD-pattern. Clade C was observed as a background clade only once in *P. damicornis* with a CD-pattern (0.04% within Li-01). In some corals, different *Symbiodinium* clades occurred in more even proportions. For example, clades C (51.07%) and D (48.93%) within *P. damicornis* (Li-02; Fig. 2C) exhibited a BCD-pattern, and clades A (57.13%) and D (42.87%) showed AD-pattern within *A. cytherea* (Va-03; Fig. 2C).

### Selective coral-*Symbiodinium* partnerships

The discriminant analysis of principal components (DAPC; Fig. 3) on the five coral species showed compositional differences among associated communities of *Symbiodinium* according to clade identity and to their density in the host. The first axis (43.9% of total variance) of the DAPC opposed *Symbiodinium* communities characterized with higher clade D density (Pearson's correlation:  $P < 0.001$ ,  $t = 15.7$ ) from communities composed of higher clade C (Pearson's correlation:  $P < 0.001$ ,  $t = -21.5$ ) and/or clade B (Pearson's correlation:  $P = 0.01$ ,  $t = -2.5$ ) densities. Clade D was strongly representative of *P. damicornis* *Symbiodinium* communities (100% of coral colonies sampled), nearly always appearing as a unique clade (24/27 = 89%; Fig. 2). In contrast, *P. rus* (18/21 = 85.7%; Fig. 2) and *P. cactus* (6/7 = 85.7%; Fig. 2) colonies were nearly exclusively composed of mono-clade C communities. However, one *P. cactus* colony also associated with clade D (Fig. 2), underlying a larger range of variation in the density of the associated symbiotic communities (wide size of discriminant ellipse, Fig. 3). The second axis (24.9% of total variance) of the DAPC differentiated *Symbiodinium* communities was composed of clade A (Pearson's correlation:  $P < 0.001$ ,  $t = 11.4$ ), and was comprised of both *Acropora* species. These two species mainly associated with multi-clade communities (*A. cytherea*: 81% and

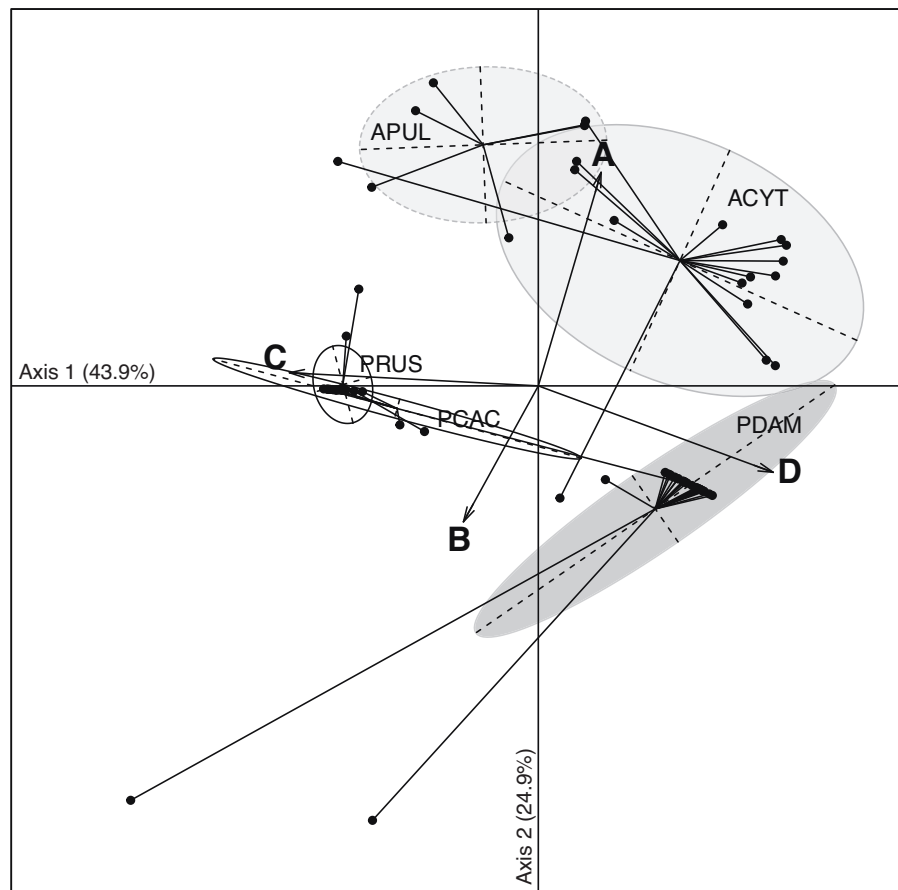
**Table 2** Proportion of background clades identified within the coral hosts *A. cytherea*, *A. pulchra*, *P. cactus*, *P. damicornis* and *P. rus*.

Species	Coral ID	Background clade proportion	
<i>A. cytherea</i>	Li-02	A = 0.0012%	
	Li-03	A = 0.0005%	
	Li-04	A = 1.5718%	
	Va-01	A = 0.7750%	
	Va-02	A = 0.1496%	
	Va-04	C = 3.0797%	A = 0.2089%
<i>A. pulchra</i>	Va-05	A = 0.3314%	
	Te-02	A = 0.0242%	
	Te-03	C = 1.5921%	
	Te-04	A = 0.1931%	
	Te-05	A = 0.8460%	
	Te-06	A = 0.7958%	
<i>P. cactus</i>	Ti-04	C = 5.0116%	
	Ti-05	A = 0.2073%	
	Ti-06	D = 0.7418%	A = 0.3984%
<i>P. damicornis</i>	Ti-05	D = 0.0029%	
<i>P. rus</i>	Li-01	C = 0.0380%	
	Li-02	B = 0.0002%	
	Ti-01	B = 0.0009%	A = 0.0002%
<i>P. rus</i>	Li-05	A = 0.0001%	
	Va-03	A = 0.0020%	
	Va-05	D = 0.0259%	

*A. pulchra*: 67%) and were distinguished by a second preferential clade in addition to clade A (Figs. 2 and 3): D for *A. cytherea* (AD and ACD patterns 11/16 = 68.8%) and C for *A. pulchra* (AC and ACD patterns 4/6 = 66.7%).

## DISCUSSION

This study analyzed the *Symbiodinium* communities of five abundant coral species from Moorea (*A. cytherea*, *A. pulchra*, *P. damicornis*, *P. cactus* and *P. rus*), and found *Symbiodinium* clades A, C and D (from the six clades tested, A–F) in all of the species except for *P. cactus*, which was never observed in association with clade A. This is congruent with previous observations that have described these three *Symbiodinium* clades as the primary clades inhabiting scleractinian corals (Van Oppen et al., 2005). In contrast, while *Symbiodinium* clade B is commonly reported in Caribbean corals (Rowan et al., 1997; Diekmann et al., 2003; Pettay & Lajeunesse, 2007; Cunning, Silverstein & Baker, 2015), it is rarely reported in corals from the Central Pacific (e.g., Lajeunesse, 2001). This study is the first record of clade B found associating with corals from French Polynesia (see previous studies by Magalon, Flot & Baudry, 2007; Putnam et al., 2012). Clade B was detected exclusively as a background population in *P. damicornis*, and genotyped as belonging to sub-clade B1. Coincidentally, among the few detections of *Symbiodinium* clade B in



**Figure 3** Spatio-temporal multivariate analysis of clade A–D quantifications converted in 28S copy number. Axis 1 and 2 of the discriminant analysis of principal component (DAPC) according to the five coral species: *A. cytherea*, *A. pulchra*, *P. cactus*, *P. damicornis* and *P. rus*.

Pacific corals to date (e.g., [LaJeunesse, 2001](#); [Silverstein, Correa & Baker, 2012](#); [Parkinson, Coffroth & Lajeunesse, 2015](#); [Lee et al., 2016](#)), genotype B1 associated with *P. damicornis* in Hawaii ([LaJeunesse, 2001](#)). In addition, clade B has also been found in Moorea, but as a symbiont with the nudibranch *Aeolidiella alba* ([Wecker et al., 2015](#)).

The low abundances of clade B may also have come from an exogenous source (e.g., surface environmental cells), and therefore may represent a non-symbiotic interaction with the host. However, the strict conditioning of samples during DNA extraction (e.g., eliminating traces of mucus; described in [Rouzé et al., 2016](#)), and the absence of any detection of clade B in the other coral species from the same sampling site considerably reduce this hypothesis. Instead, the rarity and low abundance of B1 lineages in corals from Moorea may be consistent with a previous report in which a B1 type was found to opportunistically associate with *Pocillopora* colonies following a coral cold-bleaching event ([LaJeunesse et al., 2010](#)). However, a recent study by [Lee et al. \(2016\)](#) conducted in Republic of Korea found clade B (type B2) to commonly reside in the host tissues of *Alveopora japonica*. Alternatively, although Pacific corals rarely associate with clade B, the function of this symbiosis may represent an, as of yet, unknown ecological niche. However,

given the rarity of this association, the significance of this partnership it likely to have minor physiological consequences on the host's survival (e.g. sensitivity to thermal stress; [Loram et al., 2007](#)).

The qPCR assays revealed that each of the four clades A–D could be detected at least once at a background level (i.e.,  $\leq 5\%$ ), a finding that is consistent with previous studies (e.g., [Mieog et al., 2007](#); [Silverstein, Correa & Baker, 2012](#)). In addition, this study increases the number of known background clades, and presents novel partnerships between corals and *Symbiodinium* (e.g., *P. rus* with clades A or D). However, some coral-*Symbiodinium* pairs were not recovered. For example, *P. cactus* was not found associating with clade A, and *P. rus*, *P. cactus* and the *Acropora* spp. did not associate with clade B. This could be due to a limited sampling effort among some of the corals (e.g., 6 *A. pulchra* sampled) rather than a selective exclusion by the host or symbiont to a particular partner by cellular recognition mechanisms ([Silverstein, Correa & Baker, 2012](#); [Davy, Allemand & Weis, 2012](#)). While a majority of background clades were only occasionally detected within some coral species (e.g., clades A and D in *P. rus* or clade B in *P. damicornis*), the presence of clade A in low abundance in *A. cytherea* was nearly exclusive. Consequently, the ability of corals to harbour multi-clade *Symbiodinium* communities at background levels may be due to the environmental history of Moorea island, which has experienced a variety of massive bleaching events ([Penin, Vidal-Dupiol & Adjeroud, 2012](#)), and therefore represents a meaningful ecological function that could influence holobiont resistance ([Berkelmans & Van Oppen, 2006](#); [Mieog et al., 2007](#)). Indeed, background clades support the potential for dynamic ecological strategies (e.g., switching vs. shuffling), as described in the ABH, that could lead to a rapid selective mechanism of tolerant coral-*Symbiodinium* partnerships in response to environmental change ([Buddemeier & Fautin, 1993](#); [Baker, 2003](#)).

Despite the observed increase in variation among *Symbiodinium* clade associations for the five coral species studied, each species was restricted to a particular dominant or background *Symbiodinium* clade(s). For example, clade A was exclusively observed ( $>95\%$ ; [Fig. 2](#)) in the *Symbiodinium* assemblages associated with both *Acropora* species, either as a background clade or as a dominant clade. Similarly, other coral species exhibited a primary association with a particular clade: either exclusively, as with clade C in *P. rus* and clade D in *P. damicornis*, or dominant, as with clade C in *P. cactus*. Similar to the study by [Putnam et al. \(2012\)](#), which investigated a wide range of fringing reefs during different seasons (i.e., dry season in this study vs. April: wet season), our findings also support consistent associations of coral species to particular *Symbiodinium* clades ([LaJeunesse et al., 2008](#); [Stat et al., 2009](#)). Given our standardized sampling method, the few exceptions of the multi-clade associations found for *P. damicornis* or *P. cactus* could be preferentially attributed to a transient acquisition of *Symbiodinium* clades ([Muscatine, 1973](#); [Yamashita et al., 2011](#); [Lee et al., 2016](#)), rather than spatial partitioning of *Symbiodinium* within host colonies (e.g., [Rowan & Knowlton, 1995](#)). Overall, our findings are consistent with corals as 'specialists' (low flexibility: specific to particular symbiont(s)) or 'generalists' (high flexibility: associated with various symbionts). To further explore symbiont diversity in

corals, similar fine-scale molecular approaches (e.g., qPCR, next generation sequencing; see [Barbrook, Voolstra & Howe, 2014](#)) should be performed on a wide range of coral species throughout a large geographic range.

The association of coral species with specific clade(s) observed among Moorea's reefs is consistent with previous reports of stable partnerships between coral hosts and subsets of *Symbiodinium* (e.g., [Thornhill et al., 2006](#); [Thornhill et al., 2009](#); [Suwa, Hirose & Hidaka, 2008](#); [Rouzé et al., 2016](#)). Such symbiotic specificity can be derived from the 'winnowing' of multiple symbiont types initially present in the host ([Nyholm & Mcfall-Ngai, 2004](#)). This process occurs in many mutualistic relationships (e.g., legume-rhizobial bacteria: [Hirsch, Lum & Downie, 2001](#); squid-luminous bacteria: [Nyholm & Mcfall-Ngai, 2004](#); cnidarian-*Symbiodinium*: [Wolfowicz et al., 2016](#)), and consists of a complex series of molecular recognition interactions between the host and the symbionts. It is likely that the specific partnerships observed between corals and *Symbiodinium* are derived from various biological traits ([Yost et al., 2013](#)), as well as different physiological and ecological attributes among *Symbiodinium* clades ([Kinzie et al., 2001](#); [Berkelmans & Van Oppen, 2006](#); [Hennige et al., 2009](#); [Baker et al., 2013](#)) that ultimately lead to the ecological success of distinct holobionts. For example, the high resistance of *Porites* to a variety of stressors could be explained, in part, by its stable association with *Symbiodinium* type C15 ([Putnam et al., 2012](#)). This symbiont has been characterized as thermally tolerant ([LaJeunesse et al., 2003](#); [Fitt et al., 2009](#)) and more resilient to extreme environmental conditions compared to other clade C types ([LaJeunesse et al., 2003](#)), which may have favored its ecological radiation throughout the Indo-Pacific ([LaJeunesse, 2005](#); [Pochon et al., 2007](#)). In this study, and similar to a previous report by [Putnam et al. \(2012\)](#), *P. cactus* always associated with *Symbiodinium* in clade C. However, it likely belongs to type C1 ([Fig. S3](#) and [Data S2](#); [Putnam et al., 2012](#)) which is described as thermo-sensitive ([Deschaseaux et al., 2014](#)), and that could explain the lower resistance to environmental conditions of the species. Similarly, the ecological sensitivity of branching corals from the genera *Acropora* and *Pocillopora* could be explained, in part, by their specialization with *Symbiodinium* clade A (type A1; [Putnam et al., 2012](#) and type A13), and clade D, type D1/D1a ([Putnam et al., 2012](#)) respectively. Indeed, while both clades A and D are often linked with eco-physiological benefits for the holobiont, including photo-protective and thermo-tolerance abilities, respectively, they have mainly been described in stressful vs. non-stressful conditions. This duality likely corresponds to trade-offs between coral host resistance and low energetic budget contributions (reviewed in [Lesser, Stat & Gates, 2013](#)). In some cases, *Symbiodinium* belonging to these clades have been reported as nominal contributors to host metabolism (e.g., growth and reproduction ([Little, Van Oppen & Willis, 2004](#); [Jones & Berkelmans, 2010](#)) and/or nutrition ([Stat, Morris & Gates, 2008](#); [Cantin et al., 2009](#); [Baker et al., 2013](#))).

The specialization of coral hosts to particular *Symbiodinium* clades likely represents a driver resulting in stable mutualisms, initiated from selective pressure, that enhances the benefits of specific symbiosis through co-evolution ([Douglas, 2008](#); [Thornhill et al., 2014](#)). However, this specialization is contrasted with the maintenance of the horizontal transmission of symbionts in the majority of coral species as well as the detection of additional clades, at trace levels, within the five coral species examined. [Lee et al.](#)

(2016) suggest that low abundance 'background' *Symbiodinium* populations are not necessarily mutualistic but can reflect a transient relative abundance in the surrounding environment, such as non-directional ingestion by polyps leading to ephemeral symbiont shifts (LaJeunesse et al., 2009; Stat et al., 2009; Coffroth et al., 2010). Nevertheless, every *Symbiodinium* species may not be transiently ingested. For example, *Symbiodinium* clade F was never found in the host tissues of the five coral species examined, despite clade F being detected in the surrounding environment (Fig. S4), and, although in a temperate environment, described as a dominant symbiont within *Alveopora japonica* (Lee et al., 2016). This suggests a combination of physiologically controlled processes among the coral host and its background *Symbiodinium* communities. Therefore, two opposite selection pressures may be co-occurring in the context of Moorea's reef environment (which has been exposed to consecutive massive bleaching events in the past): (i) the optimization of a symbiosis with a specific clade(s) and/or (ii) the maintenance of the ability to integrate several different (but not all) clades in low abundance that could yield an overall benefit to the coral holobiont.

Altogether, these findings emphasize the need to better understand whether those *Symbiodinium* present in low abundance play an ecological role for the holobiont over time, and to further explore the processes that may govern the maintenance of *Symbiodinium* in low abundance in addition to the dominant symbioses that occur with particular clades.

## ACKNOWLEDGEMENTS

We thank B Espiau and M Vairaa from CRIOBE and J Fievet (in charge of qPCR platform utilization) from IFREMER from Taravao for their advices and assistance in laboratory. We are also grateful to MA Coffroth and her laboratory (BURR; <http://www.nsm.buffalo.edu/Bio/burr/>) for providing us cultured *Symbiodinium* strains. We also thank C Bonneville who performed analyses of *Symbiodinium* diversity in the water column during her master internship.

## ADDITIONAL INFORMATION AND DECLARATIONS

### Funding

HR was supported by Proscience and TeMana o teMoana (French Polynesia) associations. Additional funding was provided by the Délégation à la Recherche of French Polynesia, the Ministère de l'Outre-Mer and the contrat de projet Etat-Polynésie française. The funders had no role in study design, data collection and analysis, decision to publish, or preparation of the manuscript.

### Grant Disclosures

The following grant information was disclosed by the authors:  
Proscience and TeMana o teMoana (French Polynesia) associations.  
Délégation à la Recherche of French Polynesia.  
Ministère de l'Outre-Mer.



## Competing Interests

The authors declare there are no competing interests.

## Author Contributions

- Héloïse Rouzé conceived and designed the experiments, performed the experiments, analyzed the data, wrote the paper, prepared figures and/or tables, reviewed drafts of the paper.
- Gaël J. Lecellier conceived and designed the experiments, analyzed the data, contributed reagents/materials/analysis tools, reviewed drafts of the paper.
- Denis Saulnier, Serge Planes and Yannick Gueguen contributed reagents/materials/analysis tools, reviewed drafts of the paper.
- Herman H. Wirshing reviewed drafts of the paper.
- Véronique Berteaux-Lecellier conceived and designed the experiments, contributed reagents/materials/analysis tools, reviewed drafts of the paper.

## DNA Deposition

The following information was supplied regarding the deposition of DNA sequences:

Sequences have been provided in GenBank ([KY110998–KY111024](#)) and as [Data S2](#).

## Data Availability

The following information was supplied regarding data availability:

The raw data has been supplied as [Data S1](#).

## Supplemental Information

Supplemental information for this article can be found online at <http://dx.doi.org/10.7717/peerj.2856#supplemental-information>.

## REFERENCES

- Abrego D, Van Oppen MJH, Willis BL. 2009.** Highly infectious symbiont dominates initial uptake in coral juveniles. *Molecular Ecology* **18**:3518–3531 DOI [10.1111/j.1365-294X.2009.04275.x](#).
- Baker AC. 2003.** Flexibility and specificity in coral-algal symbiosis: diversity, ecology, and biogeography of *Symbiodinium*. *Annual Review of Ecology, Evolution, and Systematics* **34**:661–689 DOI [10.1146/annurev.ecolsys.34.011802.132417](#).
- Baker DM, Andras JP, Jordán-Garza AG, Fogel ML. 2013.** Nitrate competition in a coral symbiosis varies with temperature among *Symbiodinium* clades. *The ISME Journal* **7**:1248–51 DOI [10.1038/ismej.2013.12](#).
- Banaszak T. 2000.** The synthesis of mycosporine-like amino acids (MAAs) by cultured, symbiotic dinoflagellates. *Journal of Experimental Marine Biology and Ecology* **249**:219–233 DOI [10.1016/S0022-0981\(00\)00192-1](#).
- Barbrook AC, Voolstra CR, Howe CJ. 2014.** The chloroplast genome of a *Symbiodinium* sp. clade C3 isolate. *Protist* **165**:1–13 DOI [10.1016/j.protis.2013.09.006](#).

- Berkelmans R, Van Oppen MJH. 2006.** The role of zooxanthellae in the thermal tolerance of corals: a “nugget of hope” for coral reefs in an era of climate change. *Proceedings of the Royal Society B: Biological Sciences* **273**:2305–2312 DOI [10.1098/rspb.2006.3567](https://doi.org/10.1098/rspb.2006.3567).
- Buddemeier RW, Fautin DG. 1993.** Coral bleaching as an adaptive mechanism. *Bio-science* **43**:320–326 DOI [10.2307/1312064](https://doi.org/10.2307/1312064).
- Cantin NE, Van Oppen MJH, Willis BL, Mieog JC, Negri AP. 2009.** Juvenile corals can acquire more carbon from high-performance algal symbionts. *Coral Reefs* **28**:405–414 DOI [10.1007/s00338-009-0478-8](https://doi.org/10.1007/s00338-009-0478-8).
- Coffroth MA, Poland DM, Petrou EL, Brazeau DA, Holmberg JC. 2010.** Environmental symbiont acquisition may not be the solution to warming seas for reef-building corals. *PLoS ONE* **5**:e13258 DOI [10.1371/journal.pone.0013258](https://doi.org/10.1371/journal.pone.0013258).
- Cooper TF, Berkelmans R, Ulstrup KE, Weeks S, Radford B, Jones AM, Doyle J, Canto M, O’Leary RA, Van Oppen MJH. 2011.** Environmental factors controlling the distribution of *Symbiodinium* harboured by the coral *Acropora millepora* on the Great Barrier Reef. *PLoS ONE* **6**:e25536 DOI [10.1371/journal.pone.0025536](https://doi.org/10.1371/journal.pone.0025536).
- Cunning R, Glynn PW, Baker AC. 2013.** Flexible associations between *Pocillopora* corals and *Symbiodinium* limit utility of symbiosis ecology in defining species. *Coral Reefs* **32**:795–801 DOI [10.1007/s00338-013-1036-y](https://doi.org/10.1007/s00338-013-1036-y).
- Cunning R, Silverstein RN, Baker AC. 2015.** Investigating the causes and consequences of symbiont shuffling in a multi-partner reef coral symbiosis under environmental change. *Proceedings of the Royal Society B: Biological Sciences* **282**:20141725 DOI [10.1098/rspb.2014.1725](https://doi.org/10.1098/rspb.2014.1725).
- Davy SK, Allemand D, Weis VM. 2012.** Cell biology of cnidarian-dinoflagellate symbiosis. *Microbiology and Molecular Biology Reviews* **76**:229–261 DOI [10.1128/MMBR.05014-11](https://doi.org/10.1128/MMBR.05014-11).
- Deschaseaux ESM, Beltran VH, Jones GB, Deseo MA, Swan HB, Harrison PL, Eyre BD. 2014.** Comparative response of DMS and DMSP concentrations in *Symbiodinium* clades C1 and D1 under thermal stress. *Journal of Experimental Marine Biology and Ecology* **459**:181–189 DOI [10.1016/j.jembe.2014.05.018](https://doi.org/10.1016/j.jembe.2014.05.018).
- Diekmann O, Olsen J, Stam W, Bak R. 2003.** Genetic variation within *Symbiodinium* clade B from the coral genus *Madracis* in the Caribbean (Netherlands Antilles). *Coral Reefs* **22**:29–33 DOI [10.1007/s00338-002-0273-2](https://doi.org/10.1007/s00338-002-0273-2).
- Douglas AE. 2008.** Conflict, cheats and the persistence of symbioses. *New Phytologist* **177**:849–858 DOI [10.1111/j.1469-8137.2007.02326.x](https://doi.org/10.1111/j.1469-8137.2007.02326.x).
- Dray S, Dufour AB. 2007.** The ade4 package: implementing the duality diagram for ecologists. *Journal of Statistical Software* **22**:1–20 DOI [10.18637/jss.v022.i04](https://doi.org/10.18637/jss.v022.i04).
- Fabina NS, Putnam HM, Franklin EC, Stat M, Gates RD. 2012.** Transmission mode predicts specificity and interaction patterns in coral-*Symbiodinium* networks. *PLoS ONE* **7**(9):e44970 DOI [10.1371/journal.pone.0044970](https://doi.org/10.1371/journal.pone.0044970).
- Fabricius KE, Langdon C, Uthicke S, Humphrey C, Noonan S, De’ath G, Okazaki R, Muehllehner N, Glas MS, Lough JM. 2011.** Losers and winners in coral reefs

- acclimatized to elevated carbon dioxide concentrations. *Nature Climate Change* 1:165–169 DOI 10.1038/nclimate1122.
- Fitt WK, Gates RD, Hoegh-Guldberg O, Bythell JC, Jatkar A, Grottoli AG, Gomez M, Fisher P, Lajuenesse TC, Pantos O, Iglesias-Prieto R, Franklin DJ, Rodrigues LJ, Torregiani JM, Van Woesik R, Lesser MP. 2009. Response of two species of Indo-Pacific corals, *Porites cylindrica* and *Stylophora pistillata*, to short-term thermal stress: The host does matter in determining the tolerance of corals to bleaching. *Journal of Experimental Marine Biology and Ecology* 373:102–110 DOI 10.1016/j.jembe.2009.03.011.
- Hennige SJ, Suggett DJ, Warner ME, McDougall KE, Smith DJ. 2009. Photobiology of *Symbiodinium* revisited: bio-physical and bio-optical signatures. *Coral Reefs* 28:179–195 DOI 10.1007/s00338-008-0444-x.
- Hervé M. 2013. RVAideMemoire: Diverse basic statistical and graphical functions. R package. Version 0.9-27. Available at <https://cran.r-project.org/web/packages/RVAideMemoire/index.html>.
- Hirsch AM, Lum MR, Downie JA. 2001. What makes the rhizobia-legume symbiosis so special? *Plant Physiology* 127:1484–1492 DOI 10.1104/pp.010866.
- Jones A, Berkelmans R. 2010. Potential costs of acclimatization to a warmer climate: growth of a reef coral with heat tolerant vs. sensitive symbiont types. *PLOS ONE* 5:e10437 DOI 10.1371/journal.pone.0010437.
- Kayal M, Vercelloni J, Lison de Loma T, Bosserelle P, Chancerelle Y, Geoffroy S, Stievenart C, Michonneau F, Penin L, Planes S, Adjeroud M. 2012. Predator crown-of-thorns starfish (*Acanthaster planci*) outbreak, mass mortality of corals, and cascading effects on reef fish and benthic communities. *PLoS ONE* 7:e47363 DOI 10.1371/journal.pone.0047363.
- Kemp DW, Thornhill DJ, Rotjan RD, Iglesias-Prieto R, Fitt WK, Schmidt GW. 2015. Spatially distinct and regionally endemic *Symbiodinium* assemblages in the threatened Caribbean reef-building coral *Orbicella faveolata*. *Coral Reefs* 34:535–547 DOI 10.1007/s00338-015-1277-z.
- Kinzie RA, Takayama M, Santos SR, Coffroth MA. 2001. The adaptive bleaching hypothesis: experimental tests of critical assumptions. *Biological Bulletin* 200:51–58 DOI 10.2307/1543084.
- LaJeunesse TC. 2001. Investigating the biodiversity, ecology, and phylogeny of endosymbiotic dinoflagellates in the genus *Symbiodinium* using the ITS region: in search of a “species” level marker. *Journal of Phycology* 37:866–880 DOI 10.1046/j.1529-8817.2001.01031.x.
- LaJeunesse TC. 2005. “Species” radiations of symbiotic dinoflagellates in the Atlantic and Indo-Pacific since the Miocene-Pliocene transition. *Molecular Biology and Evolution* 22:570–581 DOI 10.1093/molbev/msi042.
- LaJeunesse TC, Bonilla HR, Warner ME, Wills M, Schmidt GW, Fitt WK. 2008. Specificity and stability in high latitude eastern Pacific coral-algal symbioses. *Limnology and Oceanography* 53:719–727 DOI 10.4319/lo.2008.53.2.0719.

- LaJeunesse TC, Loh WKW, Van Woesik R, Hoegh-Guldberg O, Schmidt GW, Fitt WK. 2003.** Low symbiont diversity in southern Great Barrier Reef corals, relative to those of the Caribbean. *Limnology and Oceanography* **48**:2046–2054 DOI [10.4319/lo.2003.48.5.2046](https://doi.org/10.4319/lo.2003.48.5.2046).
- LaJeunesse TC, Smith RT, Finney J, Oxenford H. 2009.** Outbreak and persistence of opportunistic symbiotic dinoflagellates during the 2005 Caribbean mass coral “bleaching” event. *Proceedings of the Royal Society of London B: Biological Sciences* **276**:4139–4148 DOI [10.1098/rspb.2009.1405](https://doi.org/10.1098/rspb.2009.1405).
- LaJeunesse TC, Smith R, Walther M, Pinzon J, Pettay DT, McGinley M, Aschaffenburg M, Medina-Rosas P, Cupul-Magaña AL, Pérez AL. 2010.** Host-symbiont recombination versus natural selection in the response of coral-dinoflagellate symbioses to environmental disturbance. *Proceedings of the Royal Society of London B: Biological Sciences* **277**:2925–2934 DOI [10.1098/rspb.2010.0385](https://doi.org/10.1098/rspb.2010.0385).
- LaJeunesse TC, Wham DC, Pettay DT, Parkinson JE, Keshavmurthy S, Chen CA. 2014.** Ecologically differentiated stress-tolerant endosymbionts in the dinoflagellate genus *Symbiodinium* (Dinophyceae) clade D are different species. *Phycologia* **53**:305–319 DOI [10.2216/13-186.1](https://doi.org/10.2216/13-186.1).
- Lee MJ, Jeong HJ, Jang SH, Lee SY, Kang NS, Lee KH, Kim HS, Wham DC, LaJeunesse TC. 2016.** Most low-abundance “background” *Symbiodinium* spp. are transitory and have minimal functional significance for symbiotic corals. *Microbial Ecology* **71**:771–783 DOI [10.1007/s00248-015-0724-2](https://doi.org/10.1007/s00248-015-0724-2).
- Lesser MP, Stat M, Gates RD. 2013.** The endosymbiotic dinoflagellates (*Symbiodinium* sp.) of corals are parasites and mutualists. *Coral Reefs* **32**:603–611 DOI [10.1007/s00338-013-1051-z](https://doi.org/10.1007/s00338-013-1051-z).
- Little AF, Van Oppen MJH, Willis BL. 2004.** Flexibility in algal endosymbioses shapes growth in reef corals. *Science* **304**:1492–1494 DOI [10.1126/science.1095733](https://doi.org/10.1126/science.1095733).
- Loram JE, Boonham N, O’Toole P, Trapido-Rosenthal HG, Douglas AE. 2007.** Molecular quantification of symbiotic dinoflagellate algae of the genus *Symbiodinium*. *The Biological Bulletin* **212**:259–268 DOI [10.2307/25066608](https://doi.org/10.2307/25066608).
- Magalon H, Flot J-F, Baudry E. 2007.** Molecular identification of symbiotic dinoflagellates in Pacific corals in the genus *Pocillopora*. *Coral Reefs* **26**:551–558 DOI [10.1007/s00338-007-0215-0](https://doi.org/10.1007/s00338-007-0215-0).
- McClanahan TR, Teweberhan M, Uhando CA, Maina J, Mohammed MS. 2007.** Effects of climate and seawater temperature variation on coral bleaching and mortality. *Ecological Monographs* **77**:503–525 DOI [10.1890/06-1182.1](https://doi.org/10.1890/06-1182.1).
- Mieog JC, Olsen JL, Berkelmans R, Bleuler-Martinez SA, Willis BL, Van Oppen MJH. 2009a.** The roles and interactions of symbiont, host and environment in defining coral fitness. *PLoS ONE* **4**:e6364 DOI [10.1371/journal.pone.0006364](https://doi.org/10.1371/journal.pone.0006364).
- Mieog JC, Van Oppen MJH, Berkelmans R, Stam WT, Olsen JL. 2009b.** Quantification of algal endosymbionts (*Symbiodinium*) in coral tissue using real-time PCR. *Molecular Ecology Resources* **9**:74–82 DOI [10.1111/j.1755-0998.2008.02222.x](https://doi.org/10.1111/j.1755-0998.2008.02222.x).
- Mieog JC, Van Oppen MJH, Cantin NE, Stam WT, Olsen JL. 2007.** Real-time PCR reveals a high incidence of *Symbiodinium* clade D at low levels in four scleractinian

- corals across the Great Barrier Reef: implications for symbiont shuffling. *Coral Reefs* 26:449–457 DOI 10.1007/s00338-007-0244-8.
- Muscatine L. 1973.** Nutrition of corals biology and geology of coral reefs. In: Jones OA, Eidean R, eds. *Biology and geology of coral reefs*. vol. 2. New York: Academic Press, 77–115.
- Muscatine L, Porter J. 1977.** Reef corals: mutualistic symbioses adapted to nutrient-poor environments. *Bioscience* 27:454–460 DOI 10.2307/1297526.
- Nahon S, Richoux NB, Kolasinski J, Desmalades M, Ferrier Pages C, Lecellier G, Planes S, Berteaux Lecellier V. 2013.** Spatial and temporal variations in stable carbon ( $\delta(13)C$ ) and nitrogen ( $\delta(15)N$ ) isotopic composition of symbiotic scleractinian corals. *PLoS ONE* 8:e81247 DOI 10.1371/journal.pone.0081247.
- Neave MJ, Rachmawati R, Xun L, Michell CT, Bourne DG, Apprill A, Voolstra CR. 2016.** Differential specificity between closely related corals and abundant Endozoicomonas endosymbionts across global scales. *The ISME Journal* DOI 10.1038/ismej.2016.95.
- Nyholm SV, Mcfall-Ngai MJ. 2004.** The winnowing: establishing the squid-*Vibrio* symbiosis. *Nature Reviews Microbiology* 2:632–642 DOI 10.1038/nrmicro957.
- Pandolfi JM, Connolly SR, Marshall DJ, Cohen AL. 2011.** Projecting coral reef futures under global warming and ocean acidification. *Science* 333:418–422 DOI 10.1126/science.1204794.
- Parkinson JE, Coffroth MA, Lajeunesse TC. 2015.** New species of clade B *Symbiodinium* (Dinophyceae) from the greater Caribbean belong to different functional guilds: *S. aenigmaticum* sp. nov., *S. antillogorgium* sp. nov., *S. endomadracis* sp. nov., and *S. pseudominutum* sp. nov. *Journal of Phycology* 51:850–858 DOI 10.1111/jpy.12340.
- Penin L, Adjeroud M, Schrimm M, Lenihan HS. 2007.** High spatial variability in coral bleaching around Moorea (French Polynesia): patterns across locations and water depths. *Comptes Rendus Biologies* 330:171–181 DOI 10.1016/j.crv.2006.12.003.
- Penin L, Vidal-Dupiol J, Adjeroud M. 2012.** Response of coral assemblages to thermal stress: Are bleaching intensity and spatial patterns consistent between events? *Environmental Monitoring and Assessment* 185:5031–5042 DOI 10.1007/s10661-012-2923-3.
- Pettay DT, Lajeunesse TC. 2007.** Microsatellites from clade B *Symbiodinium* spp. specialized for Caribbean corals in the genus *Madracis*. *Molecular Ecology Notes* 7:1271–1274 DOI 10.1111/j.1471-8286.2007.01852.x.
- Pochon X, Garcia-Cuetos L, Baker AC, Castella E, Pawlowski J. 2007.** One-year survey of a single Micronesian reef reveals extraordinarily rich diversity of *Symbiodinium* types in soritid foraminifera. *Coral Reefs* 26:867–882 DOI 10.1007/s00338-007-0279-x.
- Pochon X, Putnam HM, Gates RD. 2014.** Multi-gene analysis of *Symbiodinium* dinoflagellates: a perspective on rarity, symbiosis, and evolution. *PeerJ* 2:e394 DOI 10.7717/peerj.394.

- Putnam HM, Stat M, Pochon X, Gates RD. 2012.** Endosymbiotic flexibility associates with environmental sensitivity in scleractinian corals. *Proceedings of the Royal Society B: Biological Sciences* **279**:4352–4361 DOI [10.1098/rspb.2012.1454](https://doi.org/10.1098/rspb.2012.1454).
- R Core Team. 2013.** *R: A language and environment for statistical computing*. Vienna: R Foundation for Statistical Computing Available at <http://www.R-project.org/>.
- Rouzé H, Lecellier G, Langlade M, Planes S, Berteaux-Lecellier V. 2015.** Fringing reefs exposed to different levels of eutrophication and sedimentation can support the same benthic communities. *Marine Pollution Bulletin* **92**:212–221 DOI [10.1016/j.marpolbul.2014.12.016](https://doi.org/10.1016/j.marpolbul.2014.12.016).
- Rouzé H, Lecellier G, Saulnier D, Berteaux-Lecellier V. 2016.** *Symbiodinium* clades A and D differentially predispose *Acropora cytherea* to disease and *Vibrio* spp. colonization. *Ecology and Evolution* **6**:560–572 DOI [10.1002/ece3.1895](https://doi.org/10.1002/ece3.1895).
- Rowan R, Knowlton N. 1995.** Intraspecific diversity and ecological zonation in coral-algal symbiosis. *Proceedings of the National Academy of Sciences* **92**:2850–2853 DOI [10.1073/pnas.92.7.2850](https://doi.org/10.1073/pnas.92.7.2850).
- Rowan R, Knowlton N, Baker A, Jara J. 1997.** Landscape ecology of algal symbionts creates variation in episodes of coral bleaching. *Nature* **388**:265–269 DOI [10.1038/40843](https://doi.org/10.1038/40843).
- Sampayo EM, Ridgway T, Bongaerts P, Hoegh-Guldberg O. 2008.** Bleaching susceptibility and mortality of corals are determined by fine-scale differences in symbiont type. *Proceedings of the National Academy of Sciences* **105**:10444–10449 DOI [10.1073/pnas.0708049105](https://doi.org/10.1073/pnas.0708049105).
- Schmidt-Roach S, Miller KJ, Lundgren P, Andreakis N. 2014.** With eyes wide open: a revision of species within and closely related to the *Pocillopora damicornis* species complex (Scleractinia; Pocilloporidae) using morphology and genetics. *Zoological Journal of the Linnean Society* **170**:1–33 DOI [10.1111/zoj.12092](https://doi.org/10.1111/zoj.12092).
- Silverstein RN, Correa AMS, Baker AC. 2012.** Specificity is rarely absolute in coral-algal symbiosis: implications for coral response to climate change. *Proceedings of the Royal Society B: Biological Sciences* **279**:2609–2618 DOI [10.1098/rspb.2012.0055](https://doi.org/10.1098/rspb.2012.0055).
- Stat M, Carter D, Hoegh-Guldberg O. 2006.** The evolutionary history of *Symbiodinium* and scleractinian hosts-symbiosis, diversity, and the effect of climate change. *Perspectives in Plant Ecology, Evolution and Systematics* **8**:23–43 DOI [10.1016/j.ppees.2006.04.001](https://doi.org/10.1016/j.ppees.2006.04.001).
- Stat M, Loh WKW, LaJeunesse TC, Hoegh-Guldberg O, Carter DA. 2009.** Stability of coral-endosymbiont associations during and after a thermal stress event in the southern Great Barrier Reef. *Coral Reefs* **28**:709–713 DOI [10.1007/s00338-009-0509-5](https://doi.org/10.1007/s00338-009-0509-5).
- Stat M, Morris E, Gates RD. 2008.** Functional diversity in coral-dinoflagellate symbiosis. *Proceedings of the National Academy of Sciences of the United States of America* **105**:9256–61 DOI [10.1073/pnas.0801328105](https://doi.org/10.1073/pnas.0801328105).
- Suwa R, Hirose M, Hidaka M. 2008.** Seasonal fluctuation in zooxanthellar genotype composition and photophysiology in the corals *Pavona divaricata* and *P. decussata*. *Marine Ecology Progress Series* **361**:129–137 DOI [10.3354/meps07372](https://doi.org/10.3354/meps07372).

- Thornhill DJ, LaJeunesse TC, Kemp DW, Fitt WK, Schmidt GW. 2006.** Multi-year, seasonal genotypic surveys of coral-algal symbioses reveal prevalent stability or post-bleaching reversion. *Marine Biology* **148**:711–722 DOI [10.1007/s00227-005-0114-2](https://doi.org/10.1007/s00227-005-0114-2).
- Thornhill DJ, Lewis AM, Wham DC, Lajeunesse TC. 2014.** Host-specialist lineages dominate the adaptive radiation of reef coral endosymbionts. *Evolution* **68**:352–367 DOI [10.5061/dryad.2247c](https://doi.org/10.5061/dryad.2247c).
- Thornhill DJ, Xiang Y, Fitt WK, Santos SR. 2009.** Reef endemism, host specificity and temporal stability in populations of symbiotic dinoflagellates from two ecologically dominant Caribbean corals. *PLoS ONE* **4**:e6262 DOI [10.1371/journal.pone.0006262](https://doi.org/10.1371/journal.pone.0006262).
- Ulstrup KE, Van Oppen MJH. 2003.** Geographic and habitat partitioning of genetically distinct zooxanthellae (*Symbiodinium*) in *Acropora* corals on the Great Barrier Reef. *Molecular Ecology* **12**:3477–3484 DOI [10.1046/j.1365-294X.2003.01988.x](https://doi.org/10.1046/j.1365-294X.2003.01988.x).
- Untergasser A, Cutcutache I, Koressaar T, Ye J, Faircloth BC, Remm M, Rozen SG. 2012.** Primer3-new capabilities and interfaces. *Nucleic Acids Research* **40**:e115–e115 DOI [10.1093/nar/gks596](https://doi.org/10.1093/nar/gks596).
- Van Oppen MJH, Mieog JC, Sánchez CA, Fabricius KE. 2005.** Diversity of algal endosymbionts (zooxanthellae) in octocorals: the roles of geography and host relationships. *Molecular Ecology* **14**:2403–2417 DOI [10.1111/j.1365-294X.2005.02545.x](https://doi.org/10.1111/j.1365-294X.2005.02545.x).
- Van Oppen MJH, Palstra FP, Piquet AMT, Miller DJ. 2001.** Patterns of coral-dinoflagellate associations in *Acropora*: significance of local availability and physiology of *Symbiodinium* strains and host-symbiont selectivity. *Proceedings of the Royal Society of London B: Biological Sciences* **268**:1759–1767 DOI [10.1098/rspb.2001.1733](https://doi.org/10.1098/rspb.2001.1733).
- Van Woesik R, Sakai K, Ganase A, Loya Y. 2011.** Revisiting the winners and the losers a decade after coral bleaching. *Marine Ecology Progress Series* **434**:67–76 DOI [10.3354/meps09203](https://doi.org/10.3354/meps09203).
- Wecker P, Fournier A, Bosserelle P, Debitus C, Lecellier G, Berteaux-Lecellier V. 2015.** Dinoflagellate diversity among nudibranchs and sponges from French Polynesia: insights into associations and transfer. *Comptes Rendus Biologies* **338**:278–283 DOI [10.1016/j.crv.2015.01.005](https://doi.org/10.1016/j.crv.2015.01.005).
- Wolfowicz I, Baumgarten S, Voss PA, Hambleton EA, Voolstra CR, Hatta M, Guse A. 2016.** *Aiptasia* sp. larvae as a model to reveal mechanisms of symbiont selection in cnidarians. *Scientific Reports* **6**:32366 DOI [10.1038/srep32366](https://doi.org/10.1038/srep32366).
- Yamashita H, Suzuki G, Hayashibara T, Koike K. 2011.** Do corals select zooxanthellae by alternative discharge? *Marine Biology* **158**:87–100 DOI [10.1007/s00227-010-1544-z](https://doi.org/10.1007/s00227-010-1544-z).
- Yost DM, Wang L, Fan T, Chen C, Lee RW, Sogin E, Gates RD. 2013.** Diversity in skeletal architecture influences biological heterogeneity and *Symbiodinium* habitat in corals. *Zoology* **116**:262–269 DOI [10.1016/j.zool.2013.06.001](https://doi.org/10.1016/j.zool.2013.06.001).